



Manitowoc County Health Department

Annual Report

2025



Table of Contents

2025 Health Officer Statement.....	03	Community Specific Services.....	11
About Us.....	04	Radon	
Staff		WellTAP	
Vision, Mission, Values		Radiation Protection	
Board of Health		Routine Immunizations	
Guiding Frameworks		Maternal, Child & Family Health.....	14
Communicable Disease.....	06	Community Baby Shower	
Respiratory Diseases		Childhood Lead Poisoning Prevention	
Enteric Diseases		Adolescent Well Being	
Tick-Borne Diseases		Women, Infants, and Children (WIC)	
Sexually Transmitted Infections (STIs)		Access to & Linkage to Care.....	15
Chronic Disease & Injury Prevention.....	08	Pregnancy and Birth Outcomes	
Summer Safety		Lived Experience Panels	
Healthiest Manitowoc County (HMC)		Health Promotion	
Environmental Public Health.....	10	Interpreter Services	
Inspections and Licensing		Foundational Capabilities.....	17
Beach Water Monitoring Program		Assessment & Surveillance	
Rabies Control		Accountability & Performance Management (PM)	
Safe Drinking Water		Financial Overview.....	18
		Appendix A: Disease Case Counts.....	19

Disclaimers

This report should be used to better understand the scope of the Health Department's role within the community and how time and resources are spent by staff. Not all work is included within the report, but important programs and activities have been selected as highlights.

It is important to understand data used within this report may vary slightly over time due to ongoing case follow-up and data verification.

Disclaimer for birth and data information: The data estimates are provisional and subject to change. Please interpret associated indicators with caution.

Staffing and Financial information based on approved 2025 budget.

2025 Health Officer Statement & Highlights

In 2025, MCHD continued building on the foundation established in Year 1 of our 2024–2028 Strategic Plan, moving from planning into measurable action. Guided by the Foundational Public Health Services (FPHS) model, our work remained focused on our strategic priorities of **operational excellence, community engagement, and high-quality programs and services**—strengthening our capacity to protect and promote the health of Manitowoc County as we pursue our vision of a thriving community supporting better choices and health for all.

Highlights of accomplishments include:

- **Advancing a culture of accountability and continuous improvement**
 - Performance management system **recognized nationally** on the Public Health Foundation’s blog for using the FPHS framework as the backbone of our PM system, with a dashboard now tracking 6 goals, 13 objectives, and 18 metrics
 - Completed **first formal quality improvement project**, using the PDSA cycle to streamline WIC appointment scheduling and strengthen service delivery—tools adopted permanently
- **Strengthening community partnerships and public health infrastructure**
 - Conducted **7 collaborative sessions** with local hospital systems supporting community health needs assessments
 - Partnered with Manitowoc Public Utilities to **support statewide COVID-19 wastewater surveillance**.
- **Delivering responsive, high-quality programs and services**
 - Launched a **multi-channel adolescent immunization campaign** aligned with National Adolescent Immunization Action Week and led the Manitowoc County Immunization Coalition through a strategic re-evaluation of its mission and vision
 - **Expanded partnerships with higher education** institutions to host students and build a pipeline for the future public health workforce
 - Participated in a **FEMA-evaluated nuclear emergency exercise**, with staff serving on the state radiological response field team, training emergency workers, and coordinating EOC activities

We are grateful to our staff, Board of Health, community partners, and the residents of Manitowoc County for their continued support. By investing in our people, our systems, and our partnerships, we are building a public health department that is prepared to meet the needs of today and the challenges ahead.



About Us

MCHD is a stand-alone, [level III health department](#), that serves all those within Manitowoc County. Our department includes Women Infants and Children (WIC), Community Health, Environmental Health, Public Health Nursing, and Support Staff. Support staff include Bilingual Health Aides, PH Tech, and WIC Eligibility Specialist. Our activities are [guided by state statutes, rules and national standards](#).

2025 Staff



Health Director/Officer



Managers



Public Health Nurses



Community Health Strategist & Educator



Registered Environmental Sanitarians



Support Staff & Bilingual Health Aides



Nutritionists

Vision

A [thriving community](#) supporting better choices and health for all.

Mission

To protect and promote the health of Manitowoc County [in partnership with our community](#).

Values

At Manitowoc County Health Department we commit to [guiding our decisions](#), behaviors and relationships by these values: Evidence-based, Diversity, Collaboration, Trust, Integrity, Excellence.

Board of Health

[Provides leadership](#) that fosters local involvement and commitment that emphasizes public health needs and that advocates for equitable distribution of public health resources and complementary private activities that match public health needs. MCHD's board consists of [nine members appointed for two-year terms](#) by the [County Executive](#), including citizen and county board representation.

Members

Rita Metzger, Board Chair

Jonathan Neils, Board Vice-Chair

Nicholas Muench, Second Vice-Chair

Tim Jadowski, County Board member

Mike Grambow, County Board Member

Shirley Fessler, Citizen member

Dr. Brian Konowalchuk, Citizen member

Annette Kaminsky, Citizen member

Catherine Wagner, Citizen member

Medical Advisor

Dr. Pradeep Giriappa

Resolutions & Ordinances

2/4/25: Ordinance amending Manitowoc County Code § 7.21(1m) Permit and License Requirements

8/14/25: BOH approval of 2026 Health Department Additional Fee Schedule

11/4/25: Resolution Accepting 2025 Routine Immunization Through Community Engagement Grant

Guiding Frameworks

The activities and services carried out by MCHD are based on two national frameworks.

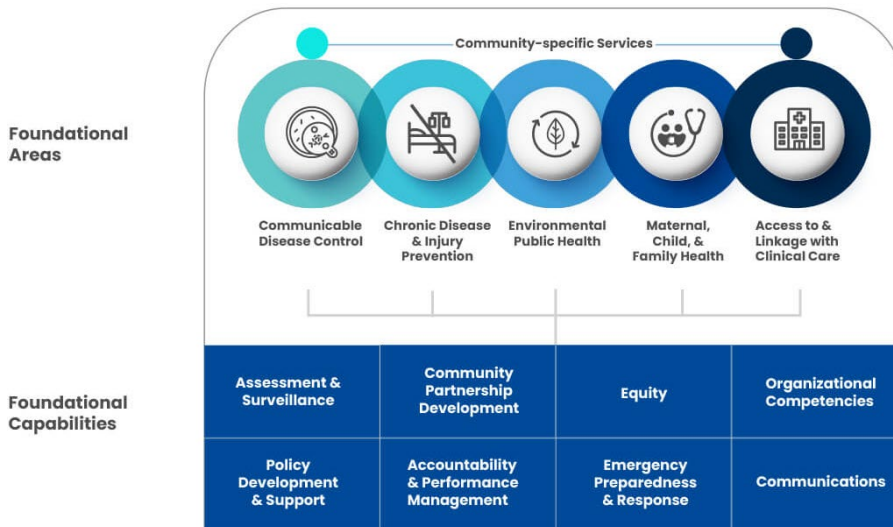
10 Essential Public Health Services (EPHS)

The [EPHS](#) define MCHD's scope of work, describes our activities and **distinguishes us from health care**. Includes assessment, policy development, and assurance activities. By using EPHS as a guide, we seek to assure a larger picture of health is considered in order to achieve a healthy community.



The Foundational Public Health Services (FPHS)

The [FPHS framework](#) outlines the **unique responsibilities** of MCHD to provide public health protections and services in five different areas, and the capabilities needed to fulfill these responsibilities. The five foundational services include communicable disease, chronic disease & Injury prevention, environmental health, maternal, child, & family health, and access to & linkage to care.



Strategic Plan

MCHD's 5-year [Strategic Plan](#) sets **broad targets for improvement** and identifying areas to invest time and resources. The plan aids in aligning the national frameworks with goals with stakeholders, community needs, and state priorities.

Key activities towards goals in 2025 include:

- Partnered with higher education institutions to support public health learning opportunities by **hosting 5 students**
- **Modernized outreach** for community vaccinations by switching to a text service
- Partnered with local hospitals to **collect and analyze community data**
- Developed a reports and communications page on the MCHD website **ensuring timely, accurate communication**
- **Trained staff and community partners** to build skills allowing for successful community coalitions
- Supported staff development to over **25 conferences/trainings/workshops**

Communicable Disease

MCHD is **responsible for investigating and following up on all reportable conditions** in Manitowoc County. These diseases and conditions are considered to have significant public health impact, and any cases must be reported according to requirements described in [Wis. Stat. ch. 252](#). In addition, MCHD receives a number of notifications about conditions that are not reportable by statute, but may require action.

Conditions that are reported involve varying levels of investigation and follow up. MCHD uses specific criteria for reportable conditions called a [surveillance case definition](#) to guide follow up activities. Surveillance case definitions are specific to public health and are different than what healthcare providers use to make clinical diagnosis or determine how to meet an individual patient's needs.

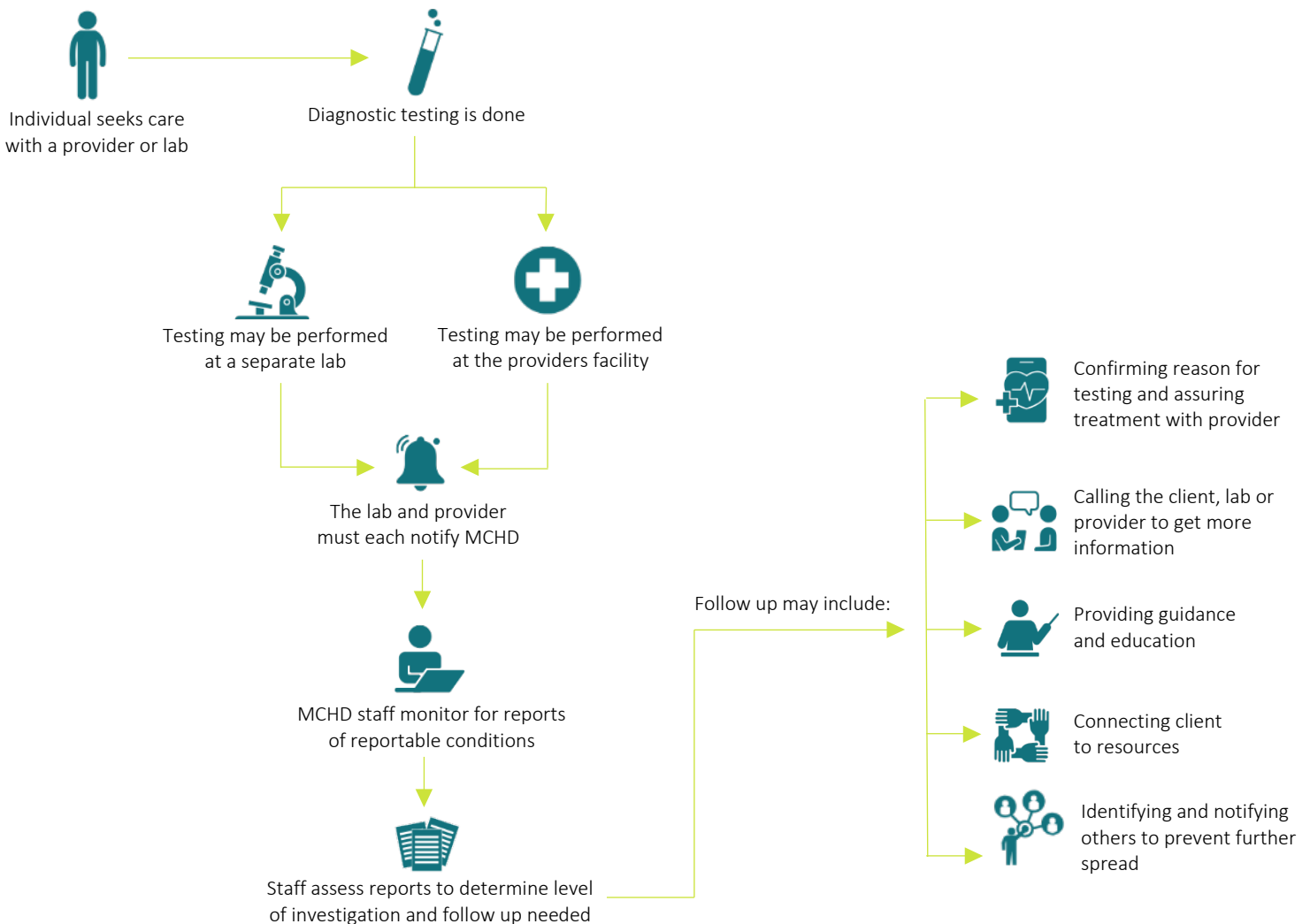
Total Conditions Received and Processed by MCHD*



2,465

Includes cases determined: confirmed, probable, suspect, not a case, and non-reportable conditions

How MCHD is notified and investigates reportable conditions

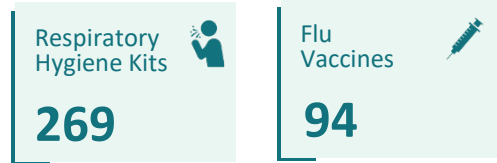


Respiratory Diseases

COVID-19, Influenza, RSV

Coronavirus Disease 2019 (COVID-19), Influenza (flu), and Respiratory Syncytial Virus (RSV) were the **top 3 reported respiratory conditions** in 2025.

MCHD activities included **keeping the public informed**, **hosting an annual flu clinic**, and creating health promotion and **prevention message/materials**.



Tuberculosis (TB)

MCHD works to assure those with **latent or active TB** are **linked to care and treatment** is completed.



Free Walk In Flu Clinic
For children 6 months - under 19 years of age
Tuesday, October 21st, 2025
4:00 PM - 6:00 PM | **Lester Public Library**
While supplies last! 1001 Adams St
Two Rivers, WI 54241

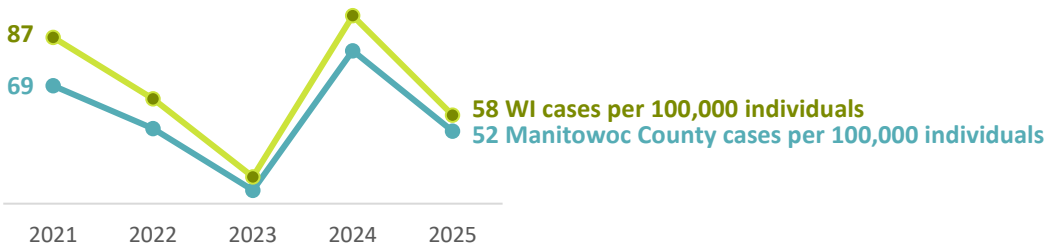
No appointments needed
No insurance restrictions

must be accompanied parent/guardian

Enteric Diseases

Enteric Diseases most commonly result from consuming contaminated foods or water resulting in illnesses that can cause vomiting, diarrhea, and fever. Both Manitowoc County and the state of Wisconsin saw a decrease in reported enteric diseases. The **most commonly reported** enteric disease in Manitowoc County in 2025 was **Campylobacteriosis**.

An online reporting tool was introduced in 2024, contributing to increased reporting of enteric diseases.



Tick-Borne Diseases

Ticks can transmit a number of diseases to humans. The **most common tick-borne disease** in Manitowoc County is **Lyme diseases**. Reports that are determined to meet the definition of a case, which specifies a characteristic **“bull’s eye” rash**, are provided education and resources.

MCHD works to prevent tick borne diseases by **distributing free tick kits** to community members and campgrounds. These kits have information and resources to prevent, and identify ticks.

In 2025, MCHD **expanded partnerships** to include the walk-in clinic at Froedtert Holy Family Memorial and making Tick Kits available inside the 24/7 **free public health vending machine** (PHVM).

Cases of Lyme Disease increased in 2025.



Tick Kits Distributed
697

Sexually Transmitted Infections (STIs)

MCHD **provides resources** and community education to prevent the spread of **Sexually transmitted infections**.

In 2025, MCHD started a partnership **providing condoms at a local establishment**. The community demand exceeded expectations with **576 condoms distributed** in just 3 months (June-August).

STI rates are below the state average.



Chronic Disease & Injury Prevention

The leading causes of death in Manitowoc County are diseases of the heart, cancers, and accidents due to unintentional injuries. MCHD collaborates with community partners and groups to **promote health and reduce injuries**.

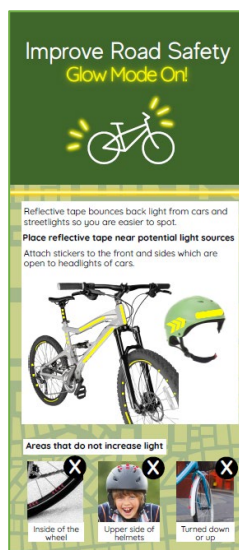
Summer Safety

MCHD shares simple tips to stay safe and healthy in the summer through an **annual campaign**. In 2025, **wheeled sport safety was emphasized**- bikes, scooters, roller blades, skateboards, etc. Education along with reflective tape were distributed to community members. MCHD partnered with Two Rivers Optimist Club to distribute bike safety kits during their annual Great Bike Giveaway event.

Bike/Wheel Safety Kits Distributed



500



Healthiest Manitowoc County (HMC)

MCHD is the backbone agency for HMC. Staff fill various roles such as coalition coordinator, advisory council members, and co-facilitators for action teams. These groups help implement the Community Health Improvement Plan (CHIP).



Fit in the Park (FIP)

Supported the [free exercise series](#) providing **low barrier opportunities to try group exercise classes** while enjoying the outdoors.



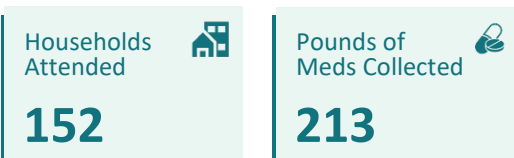
National Walk and Roll to School Day

Promoted **active modes of transportation** by encouraging local schools to participate in [Walk to School Day](#). A Golden Sneaker Award was created in 2025 to recognize a participating school's efforts in building healthy habits.



Medication Safety & Accident Prevention

Supported the [Spring Drug Takeback Day](#) in collaboration with local law enforcement, the recycling center, and a local hospital's pharmacy.



Provided Narcan for the [public health vending machine \(PHVM\)](#) and distributed **free medication lockboxes, lock bags and safe medication disposal kits** preventing accidental harm.



Environmental Public Health

Environmental Health (EH) centers on the relationships between people and their environment. It focuses on **preventing, assessing, correcting and controlling agents** in the environment which could have adverse effect on the health and well-being of individuals and communities in Manitowoc County.

Inspections and Licensing

MCHD licenses and inspects the following facilities through contracts with [DATCP](#) and [DSPS](#):

- Retail Food Facilities
- Lodging
- Campgrounds, Recreational & Educational Camps
- Body Art Facilities
- Swimming Pools, Whirlpools & Therapy Pools
- Schools- if in the USDA Hot Lunch Program

Multiple inspections may be needed per facility including pre-licensing inspections, routine inspections, re-inspections and complaint inspections.

Food Boot Camp

MCHD staff partnered with Progress Lakeshore and **presented to a group** of individuals **interested in starting their own food** business. MCHD staff discussed regulations, food codes, and different license types and requirements.



Data represents licensing year (July-June), not calendar year

“...You do such a good job sharing the relevant info with them, which makes for much wiser people when they go to start their business. Thanks for collaborating!”

-Progress Lakeshore Staff

Beach Water Monitoring

The **beach monitoring** program is a **cooperative effort** between MCHD, UW-Oshkosh, the City of Manitowoc, the City of Two Rivers and the Wisconsin DNR. **Beach water samples are routinely collected and analyzed** for levels of fecal coliform bacteria according to **EPA standards**. Results are posted to the [Wisconsin Beach Health website](#) and signage is provided at the beaches indicating the most current available water conditions and any risks associated with swimming in contaminated surface water.



Rabies Control

Rabies is a viral disease transmitted to humans from an infected mammal, usually through a bite. [Human rabies](#) is rare in the US, but once symptoms appear it is always fatal. In Wisconsin, bats and skunks are most likely to carry the virus. Other animals such as dogs, cats, and livestock may also carry the rabies virus.

MCHD serves as the **primary source of rabies information** for community partners, collaborates with law enforcement and veterinarians to **assure Wisconsin laws are followed, coordinates testing of available specimens, and issues quarantine orders** when needed.

Testing rules out the need for bite victims to undergo preventive treatment when observing the animal isn't possible. Domestic animals who have been exposed to wild animals that have tested positive for rabies or who are not available for testing require a special quarantine.

Animal Bites Reported 

237

Specimens Tested for Rabies 


24

Quarantine Orders Issued 


6

Safe Drinking Water


MCHD has a **contract with the Wisconsin DNR** to assure compliance with Wisconsin's Safe Drinking Water Code, NR 809, as it applies to public [transient non-community \(TNC\) water systems](#). TNC water systems include rural churches, restaurants, parks and taverns and other businesses that serve over 25 different people 60 days or more per year. Work includes **collecting samples, inspecting the public water systems and enforcement. Follow-up visits may be required** to assure water is safe to drink.

TNC Systems Inspected 

104

Coliform Bacteria or Nitrate Water Samples Taken 

243

Follow-up Visits Performed 

20

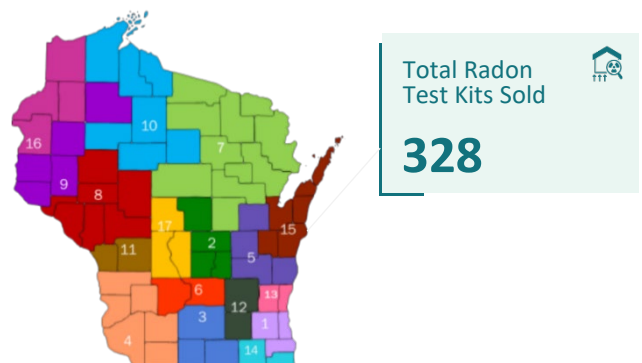
Community-Specific Services

Community-specific services refer to services that are unique needs of a specific community and vary by jurisdiction.

Radon Information Center

[Radon](#) is a naturally occurring gas that is radioactive and is the 2nd leading cause of lung cancer in the United States. About 1 in 10 homes in WI have high levels of radon.

MCHD provides test kits and education as part of our role as the [Region 15 Radon Information Center](#) covering 5 counties in Northeastern Wisconsin.



WellTAP

About 30% of WI residents get their drinking water from private wells. MCHD provides **free well water testing** for households with pregnant women or children up to age 12 and have a financial hardship. This service is provided through the state program [Wisconsin Well Testing Access Program](#) (WellTAP).

Samples are tested for coliform bacteria, nitrates, fluoride and metals. **MCHD follows up with households to provide results, education, and retesting as needed.**



Radiation Protection

Manitowoc County has the only active [nuclear power plant](#) in the state of WI. Through a contract with the State of Wisconsin, EH staff **collects environmental samples** such as air, milk, and water around the area of the nuclear plant.

Every 2 years, MCHD collaborates with other local and state agencies to conduct a **2-day, full-scale exercise evaluated by FEMA** representatives.

For the 2025 Exercise, MCHD staff

- Served on the [State Radiological Emergency Response Field Team](#) to take environmental samples
- Trained and issued [dosimetry](#) at the reception center to emergency workers
- Coordinated activities in the [Emergency Operations Center \(EOC\)](#)



Routine Immunizations

Manitowoc County Immunization Coalition (MCIC)

MCHD **serves as the chair** of MCIC comprised of healthcare professionals working together to provide vaccine education and resources. MCHD facilitates meetings and maintains the [MCIC website](#).

In 2025, MCHD staff lead efforts to reevaluate MCIC's mission, and vision. Rebranding efforts are underway starting with a new logo representing protection throughout the lifespan.

MCIC partnered with MCHD during the Fall flu clinic to provide live lookup of individuals vaccine records on the Wisconsin Immunization Registry (WIR) and answer questions attendees may have about vaccines.

Vaccines

How do vaccines work?

How do vaccines help babies fight infections?

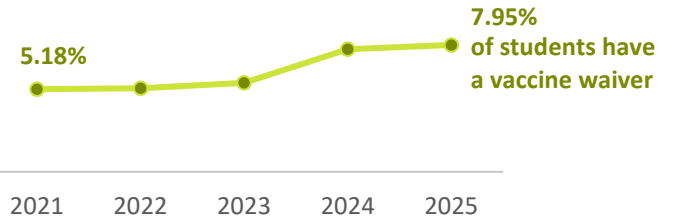
MANITOWOC COUNTY immunization coalition

School Vaccines

MCHD engages in activities to support immunization information reporting by schools including [vaccine waiver](#) rates. Waiver rates show **how well our community is protected** from vaccine-preventable diseases.

In 2025, MCHD **hosted a booth at the county wide Back-to-School event**. Staff promoted vaccinations, answered questions, and completed **live vaccine status lookups** to interested families. Demonstrations on how one can look up their vaccine history themselves on the [Wisconsin Immunization Registry \(WIR\)](#) were also provided.

Student vaccine waivers are increasing, reducing protection from vaccine preventable diseases.



Adolescent Immunization Campaign

In 2025, MCHD created a **campaign promoting vaccination for adolescents** before school finishes. The campaign launched in spring and included flyers, radio messages, a press release, multiple social media messages, and a lobby display.

The campaign worked in conjunction with **National Adolescent Immunization Action Week**.

Vaccine Clinics

MCHD is enrolled in the [Vaccines for Children \(VFC\)](#) and the [Vaccines for Adults \(VFA\)](#) programs allowing eligible individuals to receive many [CDC recommended vaccines](#) for free. MCHD continues to host a **monthly vaccine clinic** and maintains a **partnership with the jail** to immunize eligible adults.

Manitowoc County Health Department
Vaccine Appointments

Vaccines for Children (VFC)
 Free for children under the age of 19 and who meet one of the following criteria:

- Uninsured
- Medicaid Eligible
- American Indian or Alaskan Native

Vaccines for Adults (VFA)
 Free for adults age 19 and older who meet one of the following criteria:

- Uninsured
- Underinsured - insurance does not cover certain vaccines or has a cost cap for vaccines

All school required & most CDC recommended vaccines available.

Check eligibility & schedule an appointment by calling 920-683-4155.

Manitowoc County Health Department
 1028 S 9th St., Manitowoc, WI 54220
 920-683-4155

VFC Clients Served 132	Child Vaccines Given 433
VFA Clients Served 55	Adult Vaccines Given 202

Maternal, Child & Family Health

MCHD works to improve the health status of infants, children, adolescents, and families in collaboration with partners.

Community Baby Shower

MCHD supported the 3rd annual community baby shower helping new and expecting parents with young children **connect to education, support, supplies, and resources** providing a strong start to parenthood. Educational topics include swim safety, home hazards, breastfeeding support, nutrition, sleep and car seat safety, early literacy, and more. MCHD **educated parents on alternatives to screen time**, managing screen time by age, and making play educational.

Families
Attended



77

Communities
Reached



10

Childhood Lead Poisoning Prevention

Lead exposure occurs by swallowing or breathing in lead or lead dust. Exposure to lead can cause damaging effects which may last a lifetime. Even low levels of lead in blood have been shown to negatively affect a child's development.

MCHD's role includes **providing education, information and resources to individuals and community partners** in order to reduce lead exposure and mitigate the harmful effects to those who have been exposed to lead. Depending on the level, **home visits** or **lead hazard investigations** are conducted. In 2025, MCHD engaged in activities to assure children received appropriate confirmation testing.

MCHD educating the community on the risks of lead as part of a **Lead Awareness Week Campaign**. Activities included social media messages and promoting lead poisoning prevention messages and resources in the health department lobby.



Adolescent Well Being

Youth Collaborative

MCHD **educated a youth collaborative on project management** of community campaigns. The collaborative worked on campaigns for summer safety, tick prevention, and mental health with support from MCHD staff.

Providers and Teens Communicating for Health (PATCH)

Partnered with PATCH and a local school group to **organize the first Peer-to-Peer Youth Wellness Workshop**. The workshop brought together local teens from Two Rivers High School's NextGen Wellness Advocates group and was facilitated by three high school student leaders from the Green Bay area, supported by their PATCH coordinator.

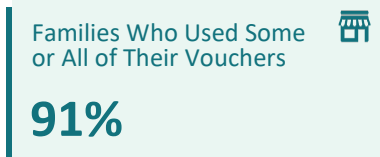


Women, Infants, and Children (WIC)

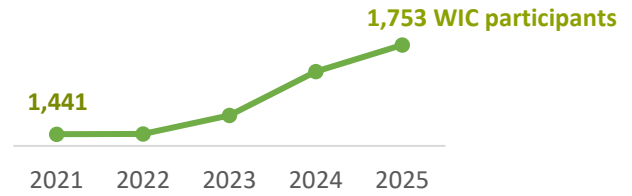
The [WIC](#) program provides [supplemental nutritious foods](#), nutrition and [breastfeeding education](#) and information to pregnant & postpartum women, infants, and children under the age of 5. WIC staff make [referrals to other services](#). In 2025, WIC benefit packages changed and staff spent time educating clients on new benefit options.

Farmer’s Market

The WIC Farmer’s Market Program offers participants [vouchers to buy fresh produce](#) at approved locations increasing access to local produce. This helps children eat healthier and supports farmers. WIC staff provide education to participants, [promote farmer’s market tours](#) for families and provide support to authorized farmers.



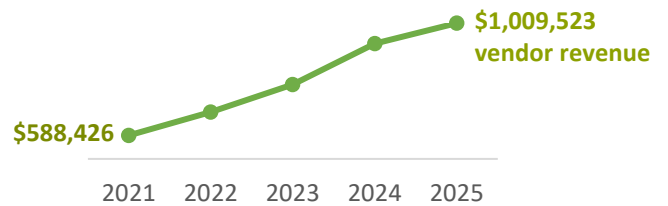
Participation in the WIC program continues to increase.



Economic Impact

WIC provides [support and monitoring to local grocers](#) & pharmacies who partner as vendors with WIC. In 2025, Manitowoc County had 12 approved vendors.

Vendor revenue has nearly doubled in the past 5 years.



Access and Linkage to Care

MCHD works with partners to assure an effective system that enables all individuals have access to services and care needed to be healthy.

Pregnancy and Birth Outcomes

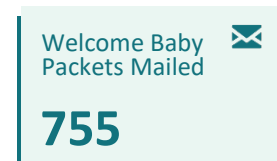
Free Pregnancy Testing

MCHD provides [free pregnancy testing for individuals without health insurance](#). Based on the test results, staff assist individuals with enrollment in Badger Care, setting up appointments with a provider, and enrollment in WIC. Referrals for tobacco cessation and case management may also be made.



Welcome Baby Packets

Healthy outcomes are increased by providing parents of [every child born](#) with a [Welcome Baby Packet of information](#) including the recommended immunization schedule, car seat safety, early literacy tips, and resources.



Lived Experience Panels

MCHD supported HMC's in creating a Breaking Barriers Series to **convene local experts and individuals with lived experience** of a specific service. The goal was to rebuild empathy, **explore barriers in local systems**, and **foster networking** for service providers finding ways to work together.

Substance Use Panel Attendees

52

Mental Health Panel Attendees

41

Health Promotion

MCHD works to keep the community informed on trending topics. In 2025, MCHD **created a communications page** on the county website allowing quick and easy access to reports, articles, and radio recordings. MCHD also participates in health promotion activities/events that **increase access to community resources**.



Events Attended

7

News Articles/ Blog Posts Made

11

Presentations Given

4

Press Releases Sent

4

Radio Shows/ Podcasts Aired

9

Facebook Posts Created

246

Rural Mental Health Promotion

MCHD created a **4-part educational series** in Fall of 2025 **geared towards farmers**. The Barn to Body Series was published in UW-Extension's Monthly Agriculture Newsletter and focused on topics of mental health, nutrition, injury prevention, forming healthy habits, recognizing stress, and resources available.

Interpreter Services

MCHD has 2 Spanish and 1 Hmong bilingual health aide who, in addition to performing **administrative duties**, **provides interpretation** for WIC appointments, communicable disease follow-up, and community events as needed and **translation services** for flyers, brochures, and important communications.

Hours of Interpretation Provided for WIC

28

Spanish Speaking Women Connected to WI Well Woman Program

4

Proteja a su familia del envenenamiento por plomo

Contáctenos: 920-683-4155 | Nuestra dirección: 1028 S. 9th St. Manitowoc, Wisconsin 54220 | Nuestro correo electrónico: healthdepartment@manitowoccountwi.gov

Ninguna cantidad de plomo es segura. El envenenamiento por plomo puede causar: Mareos y dolores de cabeza, Problemas de aprendizaje y concentración, Problemas de audición, Problemas del habla, Dolores de estómago y náuseas, Daño al riñón y al hígado.

Haga que su hijo sea examinado. La prueba es gratuita para los niños con beneficios de Medicaid y está cubierta por la mayoría de los seguros.

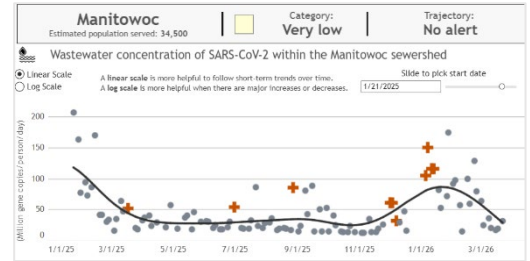
Foundational Capabilities

Foundational Capabilities are skills and capacities needed to support basic public health activities key to ensuring community health and wellbeing.

Assessment & Surveillance

Wastewater Surveillance

Began partnership with Manitowoc Public Utilities (MPU) to continue **routine wastewater monitoring of COVID-19**. Results are available on Wisconsin Department of Health Services (WI DHS) [website](#).



Community Health Needs Assessment (CHNA) Collaborative

MCHD served as a **key partner on the CHNA collaborative** assisting local hospital systems with secondary data, stakeholder interviews, survey creation and promotion. In 2025, MCHD staff helped analyze data collected in 2024 and plan local community data sessions to review and validate findings.

Accountability & Performance Management

Performance Management (PM) uses data to guide decisions, **Quality Improvement (QI)** is structured process to improve services based on community needs. MCHD has a **combined QI/PM plan** and a **PM system with 6 goals** aligned with the FPHS model.

Meet the QI/PM Team!

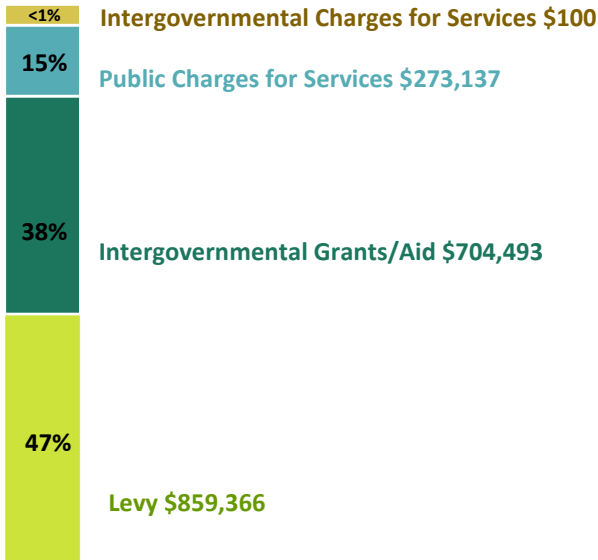


2025 Activities



Financial Overview

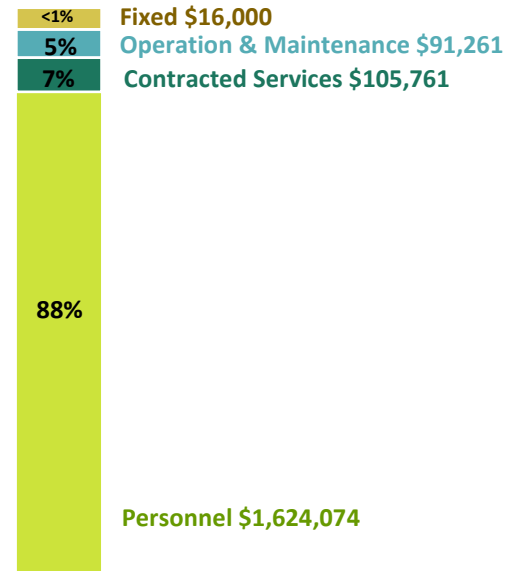
How MCHD is Funded



\$1,837,096

total estimated revenue

What the Funding Supports




\$1,837,096

total estimated expenses

Efficiency & Stewardship

MCHD is committed to being a responsible steward of public resources. In 2025, the department took deliberate steps to improve how it delivers services—modernizing processes, integrating workflows, and pursuing funding to sustain high-quality programs.

<p>60%+</p> <p>Outreach cost cut by switching to text-based immunization reminders</p>	<p>\$40K</p> <p>Competitive grant funding secured to replace aging clinic equipment and support interpreter services, without additional levy impact</p>	 <p>Expanded role redundancies and integrated workflows to support capacity for essential PH services</p>
-----------------------------------------------------------------------------------------------	-----------------------------------------------------------------------------------------------------------------------------------------------------------------	------------------------------------------------------------------------------------------------------------------------------------------------------------------------------------------------

Appendix A Disease Case Counts

Number of Confirmed & Probable Cases in 2025

- ▲ Indicates **increase** from previous year
- ▼ Indicates **decrease** from previous year
- Indicates remains at <5 from previous year or **no change**

Drug Resistant Organisms

- ▲ **8** Carbapenemase Producing Organism (CPO),
CPO Clinical

Enteric and Gastrointestinal

- ▲ **18** Campylobacteriosis
- ▼ **6** Cryptosporidiosis
- ▼ **20** E-Coli, Enteropathogenic (EPEC) &
Enterotoxigenic (ETEC)
- ▲ **6** E-Coli, Shiga Toxin- Producing (STEC)
- ▼ **6** Giardiasis
- **<5** Listeriosis
- ▲ **11** Salmonellosis
- **<5** Shigellosis
- ▼ **<5** Yersinosis

Invasive Bacteria

- **<5** Streptococcal Disease, Invasive, Group A
- ▼ **9** Streptococcal Disease, Invasive, Group B

Fungal

- **<5** Blastomycosis
- ▲ **<5** Coccidioidomycosis

Respiratory

- ▼ **36** COVID-19- Associated Hospitalization
- ▲ **97** Influenza-Associated Hospitalization
- ▲ **5** Legionellosis
- ▼ **21** RSV-Associated Hospitalization
- **<5** Tuberculosis (TB)
- **14** Tuberculosis, Latent Infection (LTBI)

Sexually Transmitted

- ▼ **131** Chlamydia Trachomatis Infection
- ▼ **16** Gonorrhea
- ▲ **<5** Pelvic Inflammatory Disease (Non GC, Non CT)
- ▲ **6** Syphilis

Vaccine Preventable

- ▼ **<5** Haemophilus Influenzae, Invasive Disease
- ▲ **<5** Hepatitis B, Acute
- **<5** Hepatitis B, Chronic
- **<5** Meningitis, Bacterial Other
- ▼ **15** Pertussis (Whooping Cough)
- **11** Streptococcus Pneumoniae, Invasive Disease
- ▲ **5** Varicella (Chickenpox)

Vectorborne

- ▲ **<5** Ehrlichiosis
- ▲ **15** Lyme Disease, Erythema Migrans (EM) Rash
- ▲ **12** Other tickborne illnesses (Anaplasmosis, Babesiosis, etc.)

Zoonotic

- **<5** Toxoplasmosis

Other

- ▼ **<5** Carbon Monoxide Poisoning
- ▼ **<5** Hepatitis C
- ▼ **12** Mycobacterial Disease (Non-Tuberculous)
- **<5** Silicosis

This report contains data from the Wisconsin Department of Health Services (WI DHS) Division of Public Health PHAVR - WEDSS County Board of Health Report for Manitowoc County from 1/1/2025 to 12/31/2025. Counts are subject to change due to ongoing case follow up and data verification. For diseases with less than 5 cases, exact numbers are not shown.

We Want to Hear From You!

If you have any **questions, comments or suggestions** for how we can improve on this report let us know!



manitowocountywi.gov/departments/health-department/



MantyCountyHealth

Manitowoc County Health Department
1028 S. 9th Street
(920)683-4155

healthdepartment@manitowocountywi.gov

