



### ***News from the Director: Winter Flurries***

Last year at this same time I started out the winter blog with this statement, "Winter is just a season, but did it arrive yet?" I now question what has occurred this season and believe this may be the least snow I have seen in my lifetime during winter, so far... and it is following a cold snap during the same time frame. For some this may be a blessing on the lower back but, for wildlife, winter snow sports, contractors and businesses who have related services for their livelihood, this is not a welcomed situation.

[Read more](#)

---

## Did You Know??.....

The Wisconsin Well Testing Access Program (WellTAP) provides no-cost testing to private well users for whom a burden prevents them from testing their wells for Wisconsin's most common groundwater contaminants. \*WellTAP is provided to well users through coordination with the Wisconsin State Lab of Hygiene (WSLH), the Wisconsin Department of Natural Resources (DNR), and local and tribal health departments (LTHDs).

### **Wisconsin WellTAP**

---

## **2025 Support and Cost-Share Available**

The Manitowoc County SWCD is excited to announce the availability of program and cost-share opportunities for producers and landowners in 2025. We encourage everyone to review the flier for detailed information on available programs and rates. If you have questions or need more guidance, please don't hesitate to call our office and speak with a resource conservationist. 920-683-4183

With new and increased cost-share rates this year, we anticipate high demand for funds, particularly for practices like cover crops, which were quickly allocated last year. To

ensure you secure the necessary support, we urge producers to reach out early and prepare a plan outlining the specific fields where you intend to plant cover crops. Taking proactive steps will help you make the most of these valuable opportunities and enhance your farming practices in the coming year.



# 2025 CONSERVATION PRACTICE FUNDING

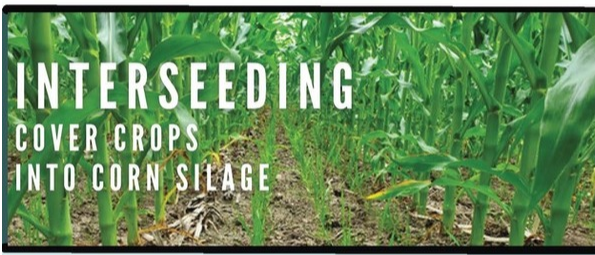
*Manitowoc County*



## HARVESTABLE BUFFERS

2025 RATES TBD

A **Harvestable Buffer** is great option for farmers who are looking to protect surface water while keeping low lands in production. Cool-season grasses provide filtration and forage benefits. Plus, the program is a way to make a little extra revenue.



## INTERSEEDING COVER CROPS INTO CORN SILAGE

# \$100/ACRE

IMPROVE SOIL STABILITY, GAIN PLANT DIVERSITY, & SAVE TIME IN FALL

**Cover Crops:** A wet fall and shorter growing season can make it difficult to plant cover crops after corn silage harvest in our area, leaving fields bare and vulnerable to soil erosion. Interseeding cover crops into corn silage is one way to ensure a cover crop has time to establish and increase soil stability. In this practice corn is planted first and the cover crop is planted at the V3-V7 corn stage, typically 2-4 weeks after planting corn.

### Have a Resource Concern?

Here are eligible practices that we frequently cost-share on.

- Writing a Nutrient Management Plan \$40/acre
- Cover Crops \$35 Single Species, \$60 Single Species that overwinters, \$75 multispecies
- Grassed Waterways
- Well Abandonment
- Manure (Waste) Storage
- Manure (Waste) Storage Closure
- Barnyard Runoff
- Water and Sediment Control Basin (WASCOB)

**STRUCTURAL PRACTICES ARE TYPICALLY COST-SHARED AT 70%**

CONTACT THE MANITOWOC COUNTY SOIL & WATER CONSERVATION DEPARTMENT TO SIGN UP: 920-683-4183



## SOIL & WATER RESOURCE MANAGEMENT COST SHARE



# 2025 CONSERVATION PRACTICE FUNDING

Manitowoc County

## CREP

(CONSERVATION RESERVE ENHANCEMENT PROGRAM)



ONE-TIME SIGNING INCENTIVE PAYMENT (SIP) FOR INSTALLING PRACTICES, AND A RENTAL AMOUNT (PER YEAR) THAT DEPENDS ON THE SOIL TYPE/LOCATION. 15 YR. AGREEMENT

By enrolling in CREP, farmers re-establish valuable land cover to help improve water quality, prevent soil erosion, reduce loss of wildlife habitat, and address other objectives identified in the CREP agreement. While enrolled in CREP, farmers receive an annual rental payment for the contract period and may be eligible for additional incentives.

## FARMLAND PRESERVATION PROGRAM



## TAX CREDIT

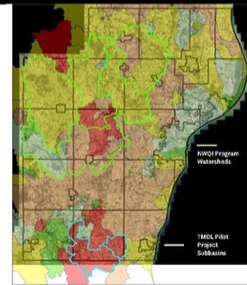
IN EXCHANGE FOR FARMING THE LAND AND MEETING CONSERVATION STANDARDS, LANDOWNERS CAN RECEIVE AN ANNUAL INCOME TAX CREDIT OF \$10.00/AC

Agriculture is vital to Wisconsin's economy and cultural identity. Our state is home to over 68,000 farms across 14.4 million acres of land. The Farmland Preservation Program provides land use tools to help ensure that this land remains available and viable for current and future generations of farmers. The program also protects soil and water because landowners must meet state conservation standards.

## NWQI & TMDL PRIORITY AREAS

### DO YOU FARM IN A GREEN OR BLUE OUTLINED WATERSHED?

These watersheds are located in National Water Quality Incentive Program (NWQI) and Northeast Lakeshore Total Maximum Daily Load (TMDL) priority areas. You may be eligible for additional and expedited cost share to install various cropland practices. Speak with a Resource Conservationist for more details!



### CONTACT US:



**Dave Wetenkamp**  
Department Director  
920-683-4293  
Facility Siting, Permits, Habitat, Engineering  
General Questions



**Cheyenne Behnke**  
Resource Conservationist  
920-683-4906  
Nutrient Management, Cost Share, Facility Siting



**Joe Henson**  
Resource Conservationist  
920-683-4888  
Groundwater, Geology, CREP, Engineering



**Eric Oppermann**  
Resource Conservationist  
920-683-4163  
Engineered Conservation Practices, Engineering



**Tara Wachowski**  
Grants & Outreach Coordinator  
920-683-5133



**SWCD Main Line**  
920-683-4183



[www.manitowocountywi.gov/departments/soil-and-water-conservation](http://www.manitowocountywi.gov/departments/soil-and-water-conservation)



4319 Expo Drive, P.O. Box 935  
Manitowoc, WI 54220



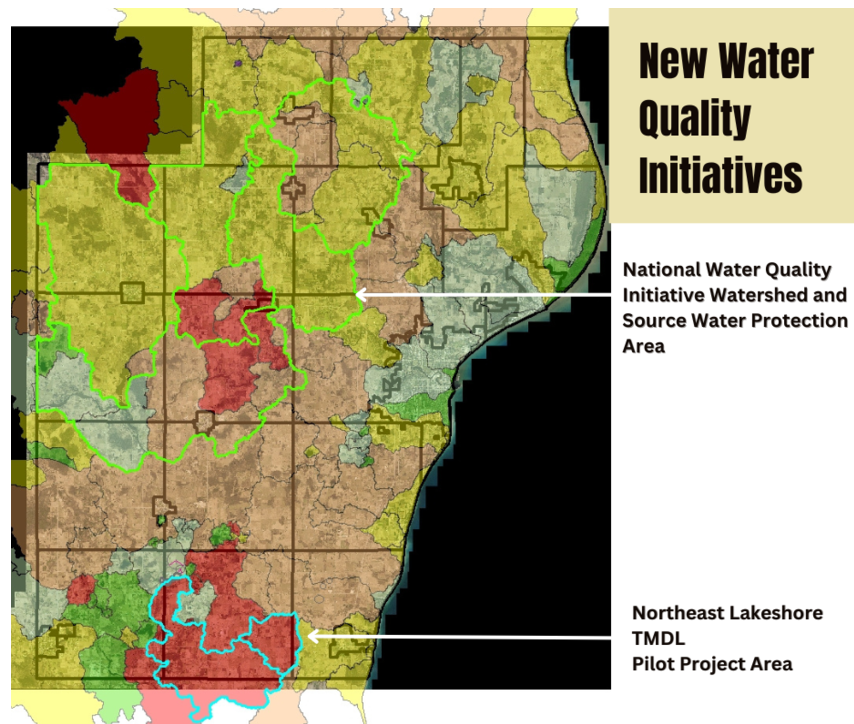
[www.facebook.com/ManitowocCountySoilandWater](https://www.facebook.com/ManitowocCountySoilandWater)

## SWCD Announces Two New Water Quality Initiatives

The SWCD is excited to announce the launch of two new water quality initiatives aimed at protecting and enhancing our local watersheds. The first initiative, in partnership with NRCS targets five watersheds in the northwest section of Manitowoc County, selected to participate in a National Water Quality Initiative focusing on groundwater protection. The initial steps will involve completing a comprehensive watershed assessment, which includes creating a groundwater table and flow map of the county while evaluating land use and practices. Following this assessment, producers and landowners will have access to special and expedited cost-share opportunities to implement various practices that safeguard groundwater.

The second initiative is the Northeast Lakeshore TMDL pilot program, which will operate in two subbasins in the southern part of Manitowoc County. In collaboration with the Wisconsin DNR, this pilot program aims to significantly reduce phosphorus entering streams and rivers that flow into Lake Michigan by 78% through the implementation of stacked best management practices (BMPs). Prioritized cost-share is also available within these subbasins.

Both initiatives are voluntary and their success relies on the active participation and commitment of landowners and producers to implement these BMPs. Stakeholders in these watersheds should watch for more information in the mail and stay tuned for upcoming informational meetings. Together, we can make a positive impact on our water quality and the health of our environment.



# OUTREACH UPDATE

## 2025 WI Land + Water Conservation Poster Contest Update

The Manitowoc County SWCD and LCC has chosen the posters that won from the county contest to advance onto the area contest. Thank you to all those that participated!



## Growing Together: Insights from the Inaugural Seven Rivers Soil Health Forum



The Seven Rivers Soil Cooperative, with assistance from SWCD and UW Extension, successfully hosted its first annual soil health forum and membership meeting on January 29, 2025 attracting around 70 attendees. In just one year, the group has doubled in size, now representing producers farming over 30,000 cropland acres across Manitowoc County. The event underscored the importance of collaboration, data sharing, and practical knowledge in enhancing farm production and environmental protection. Steve Hoffman, from InDepth Agronomy, shared insights on the critical role of green, living cover crops in managing dissolved phosphorus runoff, especially during March when most nutrient loss occurs. Additionally, a farmer panel led by Jesse Dvorachek, John Vandenoorn and Jeremy Heim explored effective manure management strategies within soil health systems. Attendees also learned about SRSC's achievements in 2024 and exciting plans for 2025, including a new cost-share program aimed at promoting soil health practices that minimize nutrient runoff while enhancing carbon capture.

# Crop and Livestock Producers

## *We want to hear from you!*



*To improve water quality and soil health, the Natural Resources Conservation Service Great Lakes Restoration Initiative started the Wisconsin Demonstration Farm Networks to help farmers establish innovative conservation practices like cover crops, conservation tillage, and low disturbance manure application.*

Our research team is evaluating the Demo Farm Networks to understand their impact and find opportunities for improvement. We are recruiting farmers across eastern Wisconsin – who have and have not participated in the Demo Farm Networks – to participate in interviews about experiences with the adoption of conservation practices on their farm. Interviews may be conducted in person or via Zoom and last from 30 to 90 minutes depending on your responses. Information you provide will be confidential. If you would like to participate or receive more information, please email Sophia Winkler-Schor at [Sophiaw@illinois.edu](mailto:Sophiaw@illinois.edu).

#### **Interview questions will focus on:**

- Farmers' background and goals
- Use of conservation practices
- Experiences with the NRCS Network
- Sources of information about conservation

**\$50**  
cash incentive  
for farmers

***Help us recruit participants!***  
***Please share this flyer with farmers in your community.***

Questions?  
Contact Dr. Sophia Winkler-Schor  
at [Sophiaw@illinois.edu](mailto:Sophiaw@illinois.edu) or  
Dr. Chloe Wardropper at  
[chloew@illinois.edu](mailto:chloew@illinois.edu)



**WISCONSIN**  
DEMONSTRATION FARM NETWORKS

For more information about the  
Networks, visit



# UPCOMING EVENTS





# YOU'RE INVITED! FARMER-TO- FARMER LUNCH-N-LEARN

CALL OR TEXT 920-973-2010  
TO RSVP BY FEBRUARY 3

Attend a location that works best for you!

All Lunch & Learns are from  
10am-12pm

GRAB LUNCH AND JOIN NEIGHBORING  
FARMERS FOR A "LUNCH AND LEARN."

TUESDAY, FEBRUARY 11TH  
MEAT'S OPERA HAUS  
204 S 4TH AVE ST. NAZIANZ

IN THIS FARMER-DRIVEN DISCUSSION  
WE'LL TALK ABOUT ALTERNATIVE  
METHODS FOR SEEDING COVER CROPS

WEDNESDAY, MARCH 19TH  
BRANCH STATION  
8112 VILLAGE DR WHITELAW

- TREVOR WITTMUS-POPLAR FARMS  
AGRONOMIST-DRONE SEEDING
- JESSY HILL-COUNTRY VISIONS  
AGRONOMIST-DIFFERENT METHODS  
OF APPLYING COVER CROPS
- ZAK KENNEKE-LIBERTYLAND FARMS-  
AIR SEEDING

---

## Nutrient Management Farmer Education Class:

### February 14

Manitowoc County SWCD is pleased to announce Part II of our Nutrient Management Farmer Education class, scheduled for February 14, 2025 from 9:00 a.m. to 3:00 p.m. at the Manitowoc County Office Complex Building Room 300, located at 4319 Expo Drive Manitowoc. This session will focus on helping participants utilize their soil test results and cropping plans to develop a 590 qualifying nutrient management plan using SnapPlus software.

Producers who attend both Part I and Part II of the class and successfully submit their nutrient management plan to SWCD will be eligible for a \$700 stipend. Additionally, funds are available to help offset costs for manure analysis and soil testing. The class will be led by representatives from UW Extension, DATCP and Manitowoc County SWCD, who will provide valuable guidance and support in navigating the SnapPlus software.

For past participants looking to update their 2025 plans, we invite you to attend the afternoon portion of the class or set up an individual appointment by calling our office at 920-683-4183.



**Nutrient Management Farmer  
Education Class**

**February 14, 2025**

**9am- 3pm**

**Manitowoc County Office Complex**



# Manitowoc County Certified Crop Advisor & Manure Applicator Meeting

February 20, 2025

9:30AM - 12:00PM

MANITOWOC COUNTY OFFICE  
COMPLEX ROOM 300

Please RSVP by February 13, 2025  
Register Online at:

<https://docs.google.com/forms/d/e/1FAIpQLSfxDeBtN27m0EGSi4QKb4A--0zEpepuA0VuYrf-FBNbm6Ng2g/viewform?usp=sharing>

Or Call 920-683-4183



## COMMUNICATE, COLLABORATE

Join us for an essential meeting designed specifically for CCAs, Manure Applicators, and Producers who apply their own manure! With the new Silurian Bedrock Standards in effect soon and TMDL implementation underway, this gathering is crucial for staying informed. Don't miss the demonstration of the new Manitowoc County Live Hazards Map, and chance to provide your feedback. This event also offers a fantastic opportunity for CCAs, manure applicators, and county representatives to engage, collaborate, and prepare for the upcoming growing season. Your participation is vital—let's work together to ensure a successful 2025!

1.5 Nutrient Management CEUs Available



9:30 HOT BREAKFAST BUFFET

10:00 **WELCOME & INTRODUCTIONS**  
Dave Wetenkamp,  
SWCD Director

10:10 **IMPLEMENTING THE SILURIAN BEDROCK STANDARD**  
Cheyenne Behnke, SWCD  
Resource Conservationist, CCA

10:30 **INTRO TO THE TMDL & TMDL PILOT PROJECT**  
Dave Wetenkamp,  
SWCD Director

11:00 **MANITOWOC COUNTY LIVE HAZARD MAP, DEMO, & FEEDBACK**  
Cheyenne Behnke, SWCD  
Resource Conservationist, CCA

11:30 **OPEN FLOOR DISCUSSIONS**  
Facilitated by Angie Ulness,  
Div of Ext, Ag Educator



MANITOWOC COUNTY OFFICE COMPLEX

ROOM 300

4319 EXPO DRIVE, MANITOWOC

SWCD has the following available for your springtime needs!!



# TREE PLANTERS AVAILABLE FOR RENT



920-683-4183

# POLLINATOR HABITAT SEED KITS

**\$16 PER KIT (COVERS 1,000 SQ. FT.)**



**IF YOU PLANT IT, THEY WILL COME!**

Attract Birds, Butterflies, Bees, &  
Wildlife

**AVAILABLE AT THE  
MANITOWOC COUNTY SOIL  
& WATER CONSERVATION  
DEPARTMENT**



**MONDAY-FRIDAY  
8:30AM-4:30PM**

**4319 Expo Drive,  
Manitowoc**

**920-683-4183**



**SUITABLE FOR FULL  
SUN LOCATIONS**

**NRCS Approved WI Native  
Pollinator Mix Includes:**

*Mondarda fistulosa* (**Bergamot**), *Rudbeckia hirta* (**Black-Eyed Susan**), *Asclepias tuberosa* (**Butterfly Milkweed**), *Astragalus canadensis* (**Canada Milkvetch**), *Asclepias syriaca* (**Common Milkweed**), *Veronicastrum virginicum* (**Culver's Root**), *Oenothera biennis* (**Evening Primrose**), *Ratibida pinnata* (**Yellow Coneflower**), *Penstemon digitalis* (**Foxglove Beardtongue**), *Agastache foeniculum* (**Giant Hyssop**), *Symphotrichum laeve* (**Smooth Blue Aster**), *Verbena stricta* (**Hoary Vervain**), *Coreopsis lanceolata* (**Lance-Leaf Coreopsis**), *Pycnanthemum virginianum* (**Mountain Mint**), *Symphotrichum novae-angliae* (**New England Aster**), *Heliopsis helianthoides* (**Ox-eye Sunflower**), *Chamaecrista fasciculata* (**Partridge Pea**), *Dalea candida* (**White Prairie Clover**), *Potentilla arguta* (**Prairie Cinquefoil**), *Echinacea purpurea* (**Purple Coneflower**), *Dalea purpurea* (**Purple Prairie Clover**), *Penstemon grandiflorus* (**Large Beardtongue**), *Schizachyrium scoparium* (**Little Bluestem**), *Bouteloua curtipendula* (**Sideoats Grama**)

**Manitowoc County Soil and Water Conservation Department**

**4319 Expo Drive, P.O. Box 935**

**Manitowoc, WI 54221-0935**

**P: 920.683.4183**



Contact Information

Manitowoc County Soil & Water Conservation Department

4319 Expo Drive, P.O. Box 935

Manitowoc, WI 54221-0935

920-683-4183

Website: <https://manitowoccountywi.gov/departments/soil-and-water-conservation>

Share this email:



emma<sup>®</sup>

[Manage](#) your preferences | [Opt out](#) using TrueRemove®

Got this as a forward? [Sign up](#) to receive our future emails.

View this email [online](#).

705 Viebahn St.  
Manitowoc, WI | 54220 US

This email was sent to .

*To continue receiving our emails, add us to your address book.*

[Subscribe](#) to our email list.