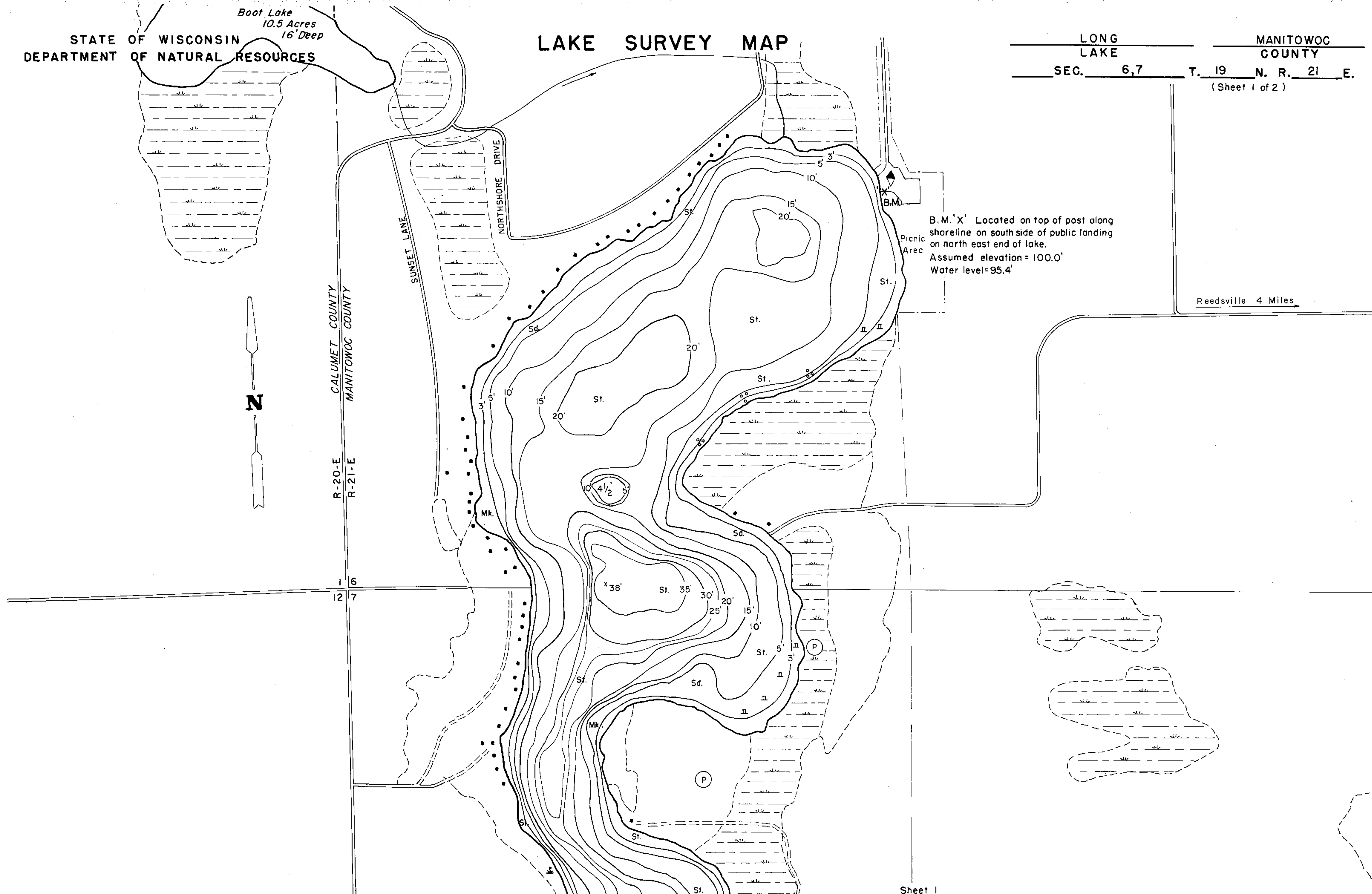


Boot Lake
10.5 Acres
16' Deep

LAKE SURVEY MAP

LONG LAKE
SEC. 6,7 T. 19 N. R. 21 E.
(Sheet 1 of 2)



B.M. 'X' Located on top of post along shoreline on south side of public landing on north east end of lake.
Assumed elevation = 100.0'
Water level = 95.4'

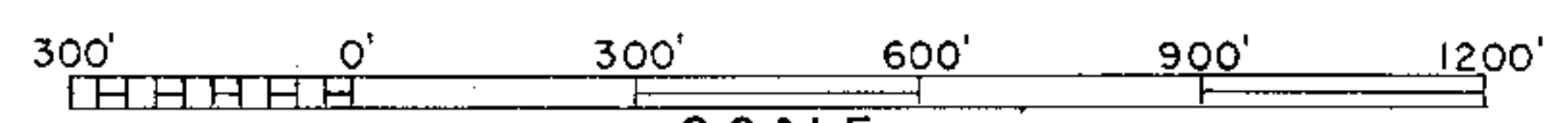
Reedsville 4 Miles



Sheet 1

EQUIPMENT RECORDING SONAR MAPPED AUGUST 1973
MONTH YEAR

| TOPOGRAPHIC SYMBOLS | | LAKE BOTTOM SYMBOLS | |
|-----------------------|-------------------------|---------------------|---------------------------|
| (B) Brush | Steep slope | P. Peat | B Boulders |
| (PW) Partially wooded | ~ Indefinite shoreline | Mk. Muck | o Stumps & Snags |
| (W) Wooded | Marsh | C. Clay | Rock danger to navigation |
| (C) Cleared | Spring | M. Marl | T Submergent vegetation |
| (P) Pastured | Intermittent stream | Sd. Sand | Emergent vegetation |
| (A) Agricultural | Permanent inlet | St. Silt | Floating vegetation |
| B.M. Bench Mark | Permanent outlet | Gr. Gravel | Brush shelters |
| ■ Dwelling | Dam | R. Rubble | |
| ■ Resort | D.N.R. State owned land | Br. Bedrock | |
| ■ Camp | | | |



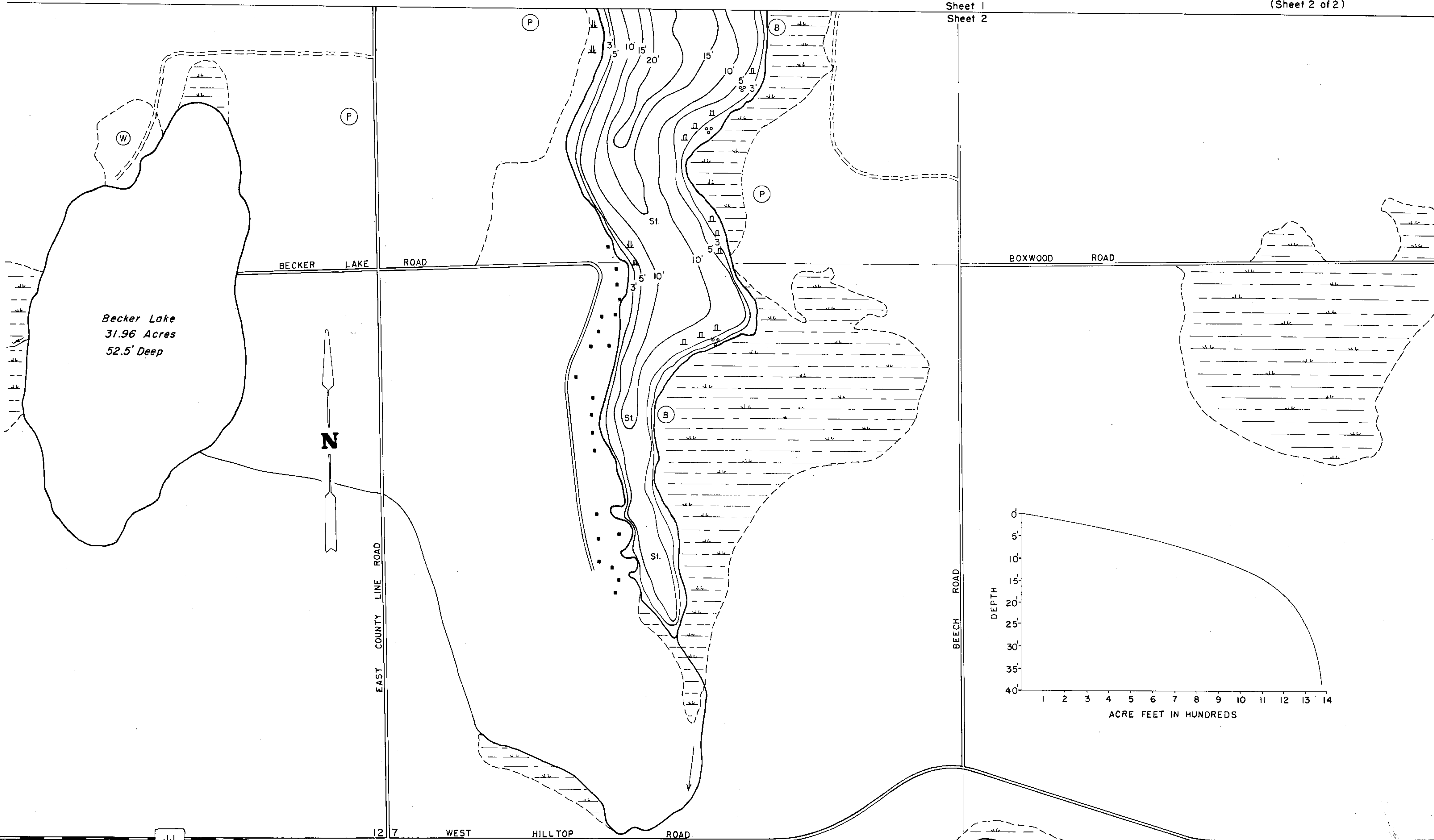
Access Access with Parking Boat Livery

Drawn by: G. Thuesen
Field work by: D. Boese, R. Thrun

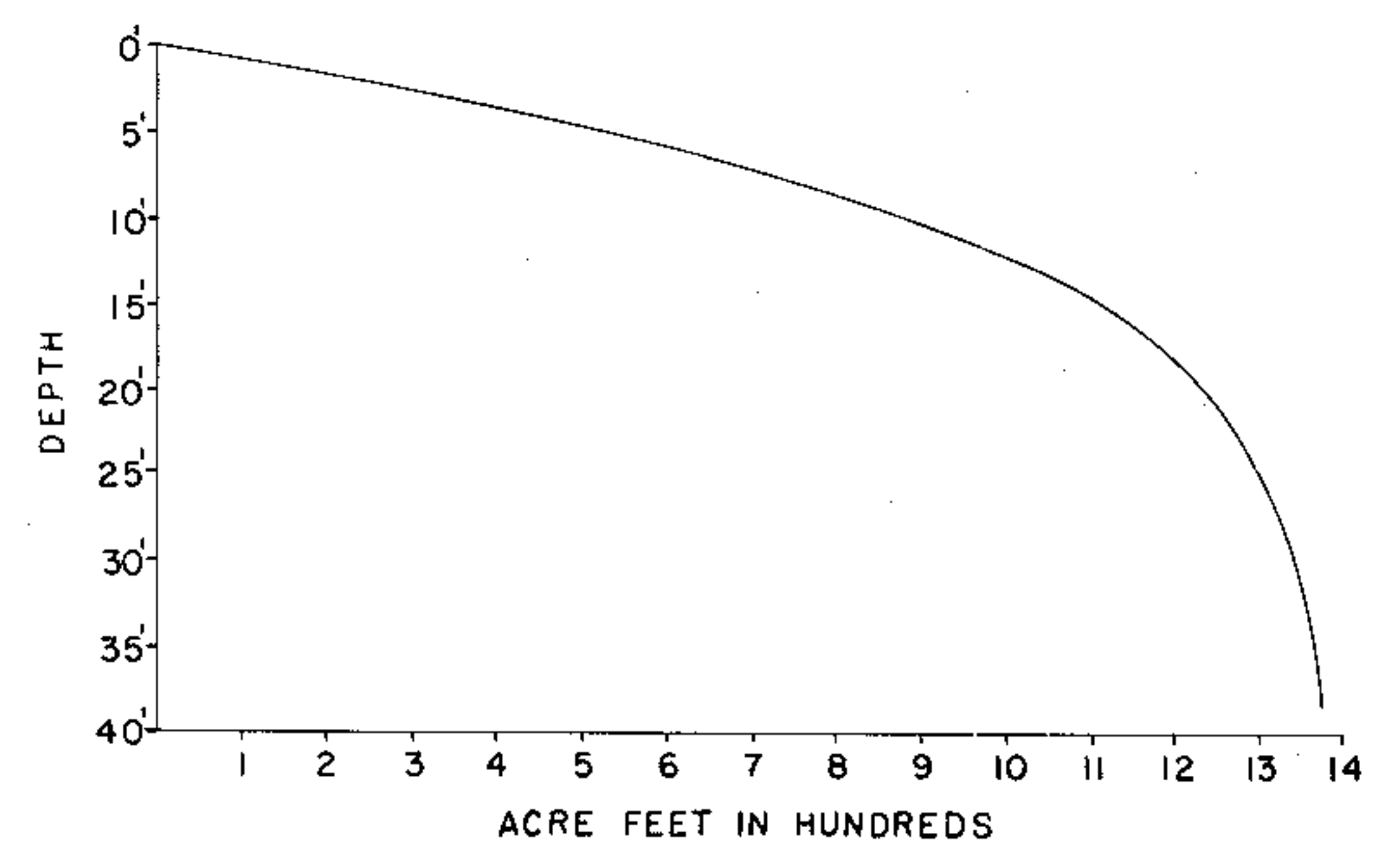
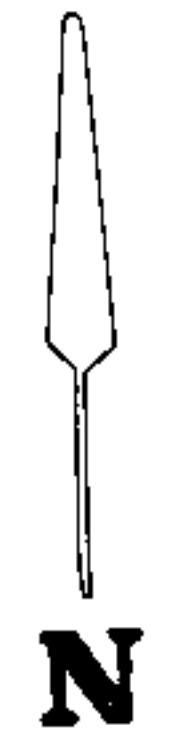
| SPECIES OF FISH | Abundant Common Present | | |
|-----------------|-------------------------|--------|---------|
| | Abundant | Common | Present |
| Muskie | | | |
| N. Pike | | X | |
| Walleye | | | |
| L.M. Bass | X | | |
| S.M. Bass | | | |
| Panfish | X | | |
| Trout | | | |

WATER AREA 119.05 ACRES
UNDER 3 FT. 12 %
OVER 20 FT. 16 %
MAX. DEPTH 38' FEET.
TOTAL ALK. 103 P.P.M.
VOLUME 1373.08 ACRE FT.
MAIN SHORELINE 3.363 MI.
ISLAND SHORELINE MI.

Sheet 1
Sheet 2



Becker Lake
31.96 Acres
52.5' Deep

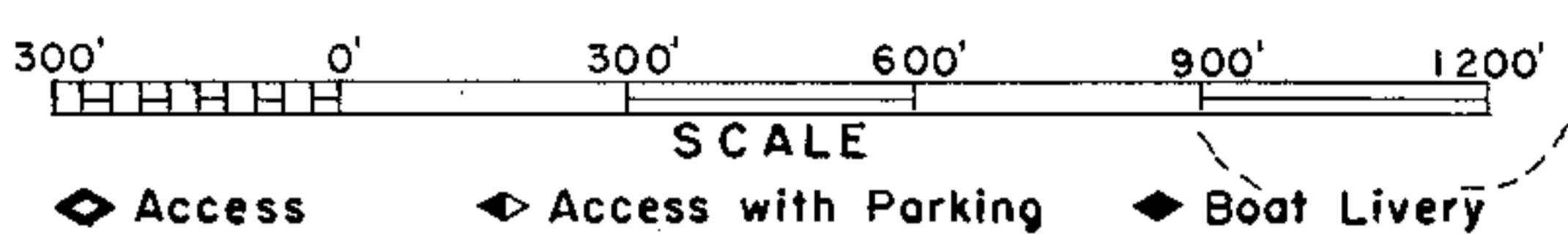


JJ

12 7 WEST HILLTOP ROAD
13 18

EQUIPMENT RECORDING SONAR MAPPED AUGUST 1973
MONTH YEAR
LAKE BOTTOM SYMBOLS

- | | | | |
|-----------------------|-------------------------|---------------------|-----------------------------|
| TOPOGRAPHIC SYMBOLS | | LAKE BOTTOM SYMBOLS | |
| (B) Brush | Steep slope | P. Peat | B Boulders |
| (PW) Partially wooded | ~ Indefinite shoreline | Mk. Muck | ⊙ Stumps & Snags |
| (W) Wooded | Marsh | C. Clay | ⊙ Rock danger to navigation |
| (C) Cleared | Spring | M. Marl | T Submergent vegetation |
| (P) Pastured | Intermittent stream | Sd. Sand | ⊥ Emergent vegetation |
| (A) Agricultural | Permanent inlet | St. Silt | ⊥ Floating vegetation |
| B.M. Bench Mark | Permanent outlet | Gr. Gravel | ⊥ Brush shelters |
| ■ Dwelling | Dam | R. Rubble | |
| □ Resort | D.N.R. State owned land | Br. Bedrock | |
| □ Camp | | | |



Drawn by: G.Thuesen
Field work by: D.Boese, R.Thrun

| SPECIES OF FISH | Abundance | | |
|-----------------|-----------|--------|---------|
| | Abundant | Common | Present |
| Muskie | | | |
| N. Pike | | X | |
| Walleye | | | |
| L.M. Bass | X | | |
| S.M. Bass | | | |
| Panfish | X | | |
| Trout | | | |

WATER AREA 119.05 ACRES
UNDER 3 FT. 12 %
OVER 20 FT. 16 %
MAX. DEPTH 38' FEET.
TOTAL ALK. 103 P.P.M.
VOLUME 1373.08 ACRE FT.
MAIN SHORELINE 3.363 MI.
ISLAND SHORELINE MI.

Source: Wisconsin Department of Natural Resources 608-266-2621
Long Lake – Manitowoc County, Wisconsin DNR Lake Map
Date – Aug 1973 - Historical Lake Map - Not for Navigation
A Public Document - Please Identify the Source when using it.