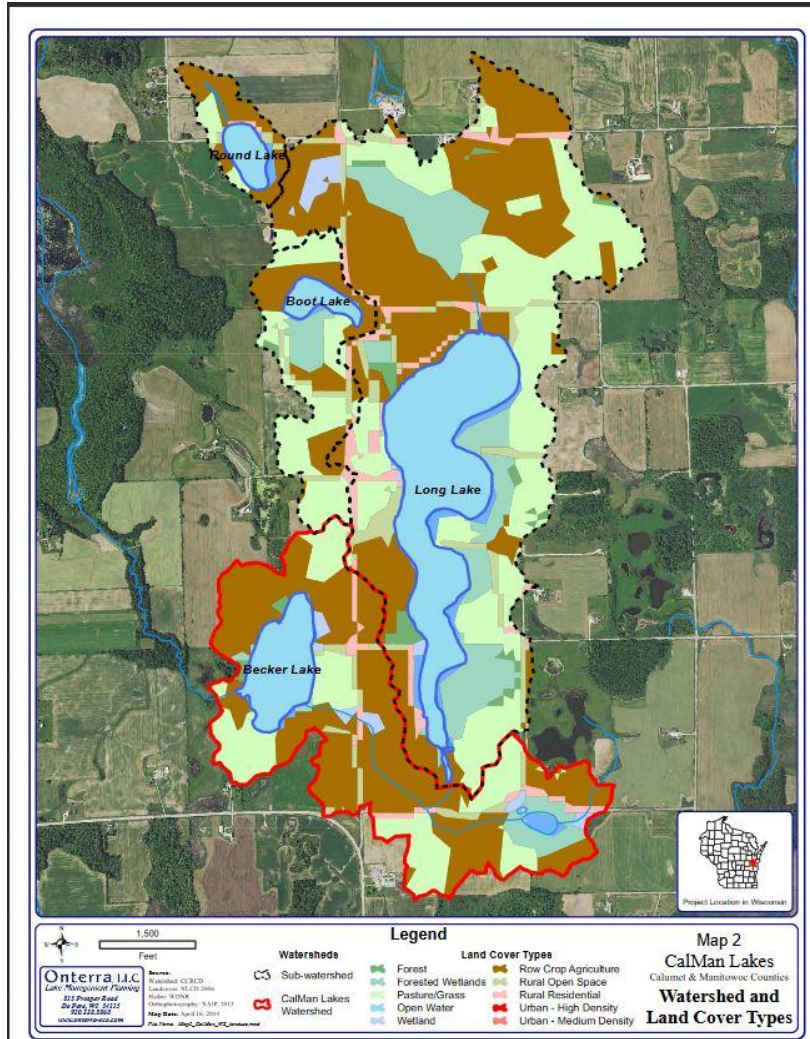


CalMan Lakes Watershed Project

The CalMan Lakes Watershed consists of four lakes located along the Calumet-Manitowoc County border in northeastern Wisconsin. The lakes are enjoyed by many sportsmen, swimmers, and nature enthusiasts from within and outside of Calumet and Manitowoc counties. However, recent algal blooms, invasive species issues, and fish kills have indicated that these lakes are in need of some serious help. The counties, along with various stakeholders such as the Brillion Conservation Club, Long Lake Advancement Association, lakeshore properties owners and others are partnering on several projects to improve and maintain a healthy watershed for future sportsmen and recreation enthusiasts to enjoy.



underway. Local farmers have been working with conservation staff from both counties to implement practices to reduce sediment loss and nutrient loading to the lakes. Larger projects are in the works, as funding is pursued. Some projects to date include:

- Engineered Waterways
- Nutrient Management Plans
- No till test plots

Click the link below to learn more about the plan.

<http://www.co.calumet.wi.us/DocumentCenter/View/3698>