

Responding to Manure Spills & Run-Off Events Manitowoc County

Create a Dam



Create a dam to stop the flow of manure.

Divert Manure



Divert manure from critical sites, including culverts, as shown in this picture.

Remove Manure



Use a vacuum truck to remove manure from critical sites.



Developed by:
Scott Gunderson and Jerry Halverson
Manitowoc County University of Wisconsin-Extension
Manitowoc County Soil & Water Conservation Department

Developed: October, 2003
Revised: September, 2009
Second Revision: November, 2013
Third Revision: November, 2014
Fourth Revision: July, 2016
Fifth Revision: March, 2019

Who to Contact if a Manure Spill or Run-off Occurs:

Wisconsin DNR Spill Reporting Hotline:

1-800-943-0003

This number is staffed 24 hours a day

Manitowoc County Soil and Water Conservation Department:

Office: (920) 683-4183

Monday: 8:30 a.m. to 5:00 p.m.

Tuesday through Friday: 8:30 a.m. to 4:30 p.m.

Manitowoc County Emergency Management:

Office: (920) 683-4207

Manitowoc County Sheriff's Department:

Office: (920) 683-4200

Use Caution when Applying Manure Near Critical Sites Which Include:

- ◆ Channels
- ◆ Ditches
- ◆ Waterways
- ◆ Streams
- ◆ Rivers
- ◆ Ponds
- ◆ Tile inlets
- ◆ Broken tile lines
- ◆ Sinkholes
- ◆ Bedrock near surface

Utilize current hazard maps provided by the Manitowoc County Soil and Water Conservation Department at <http://webmap2.manitowoc-county.com/hazard%202008/home.html> or call (920) 683-4183 for assistance.



If manure is running off the field while surface applying, STOP! Work manure into the soil immediately.



Wisconsin state law requires immediate reporting of manure spills and run-off to the

**DNR Spill Reporting Hotline
at 1-800-943-0003**

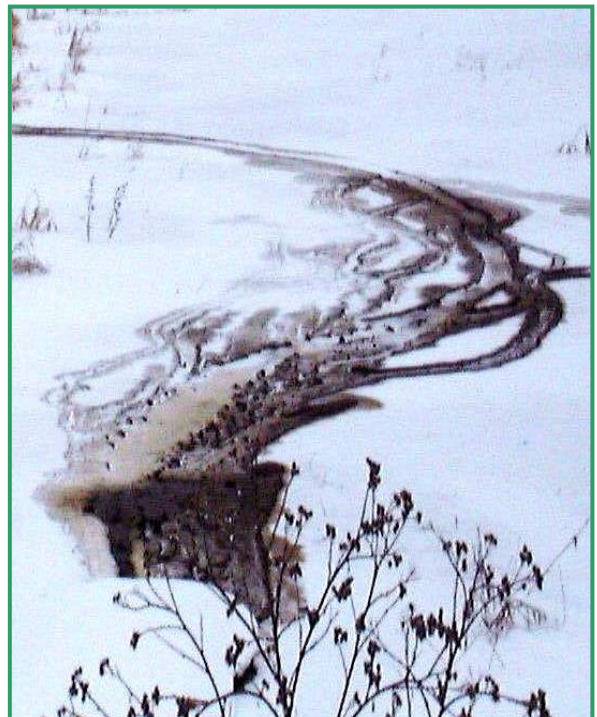
if it threatens to cause adverse impacts to human health, safety, or the environment.

Leaks and Spills from Manure Storage Facilities:

- Contain the spill immediately through the use of basins and berms
- Divert manure from critical sites including: wells, channels, ditches, waterways, streams, rivers, lakes, ponds, tile inlets, broken tile lines, sinkholes, and bedrock near the surface
- Repair storage facility immediately
- If field conditions warrant, remove only enough manure to get you through to the next scheduled application cycle (e.g. spring or fall)
- Contact the Manitowoc County Soil & Water Conservation Department (920-683-4183) to make critical repairs

Manure Run-off from Fields:

- Stop manure application immediately
- Contain run-off immediately through the use of berms and basins
- Divert manure run-off from critical sites including: wells, channels, ditches, waterways, streams, rivers, lakes, ponds, tile inlets, broken tile lines, sinkholes, and bedrock near the surface
- Incorporate applied manure
- Plug tile lines if manure has entered them
- Evaluate and eliminate the situation that caused the run-off



When you report a spill, you will need to provide the following information:

- Your name and address and the location of the spill, along with the property owner's name
- The physical state, quantity, and chemical characteristics of the discharged substances
- Actions that you took to stop the release and/or minimize the impact to the environment
- The actual or potential impacts to human health and the environment

An accidental spill is not illegal. Failure to report it is.