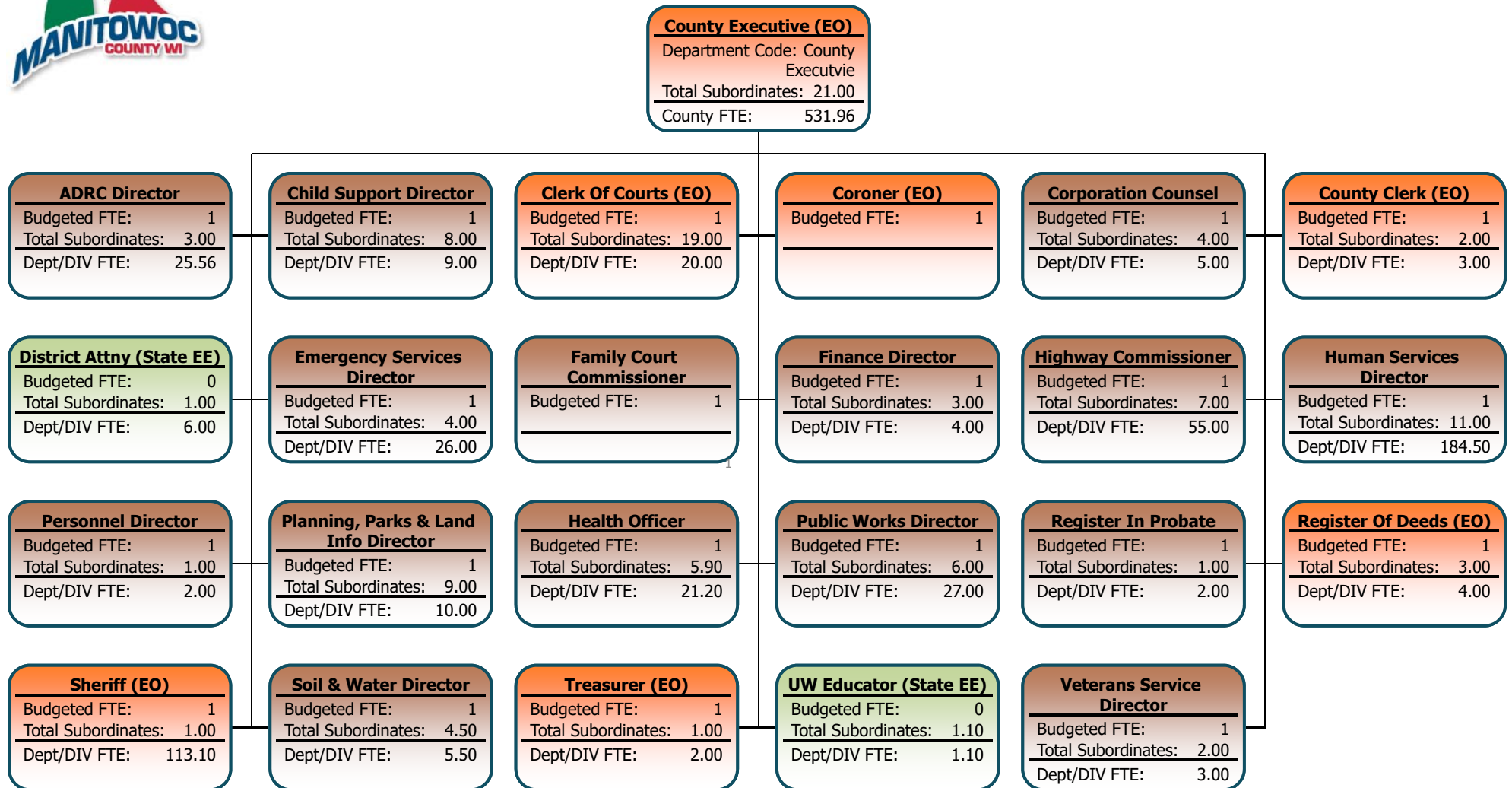
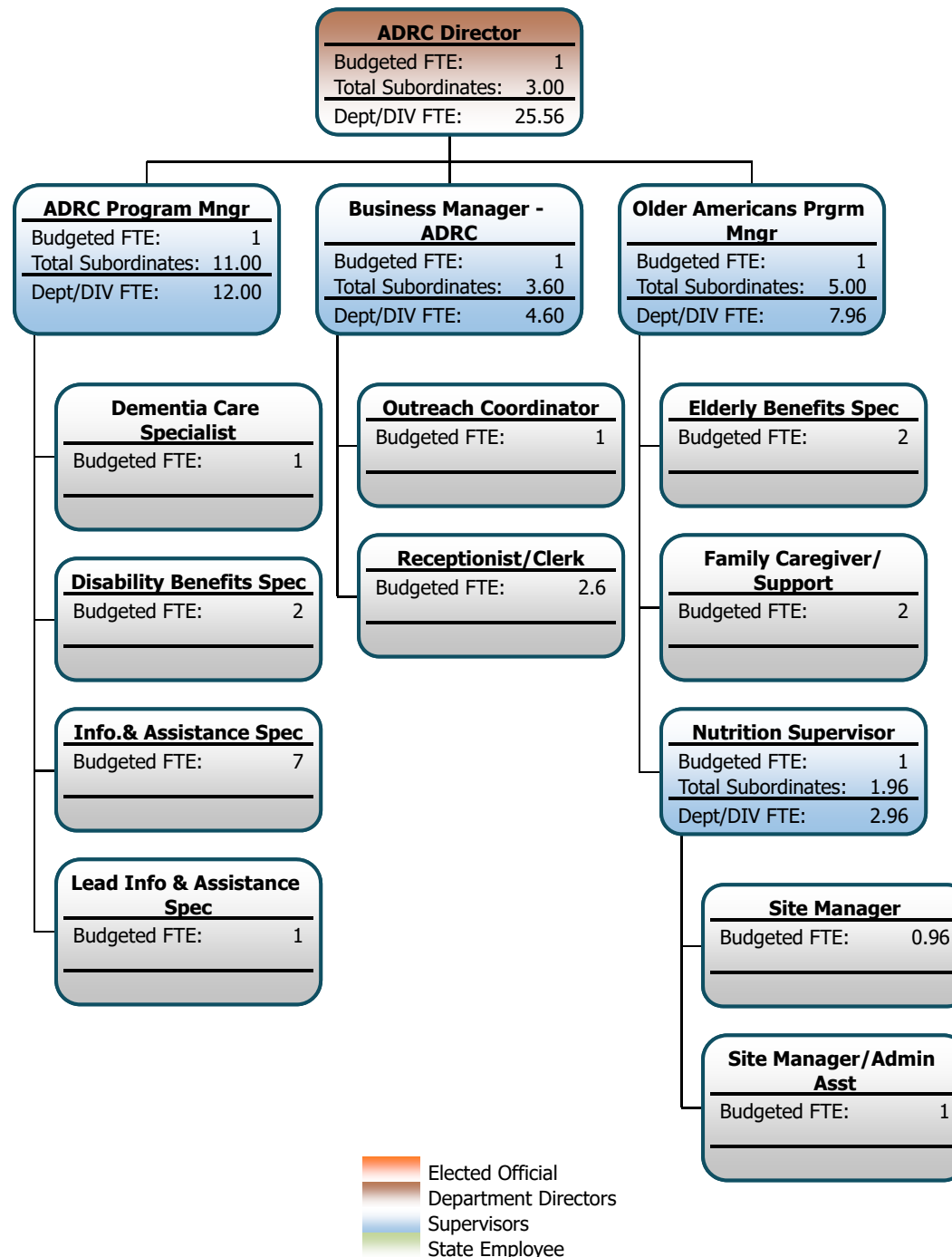




# County Executive

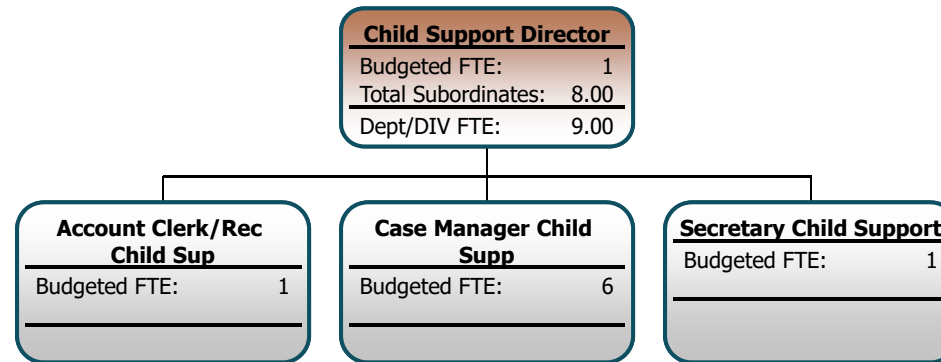


Elected Official  
Department Directors  
Supervisors  
State Employee



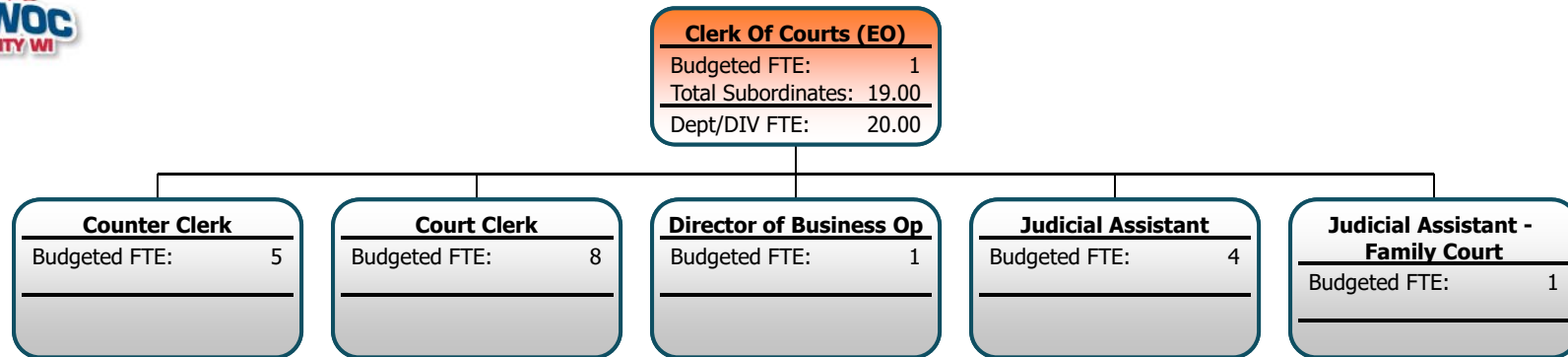






# Child Support





# Clerk of Courts



 Elected Official  
 Department Directors  
 Supervisors  
 State Employee

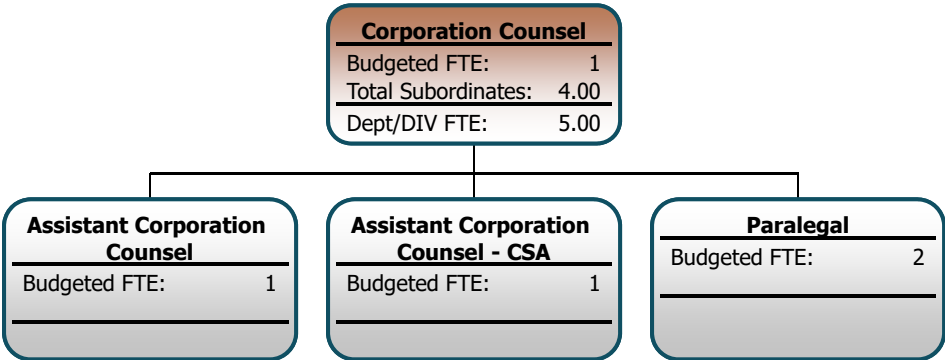


## Coroner

Coroner (EO)	
Budgeted FTE:	1



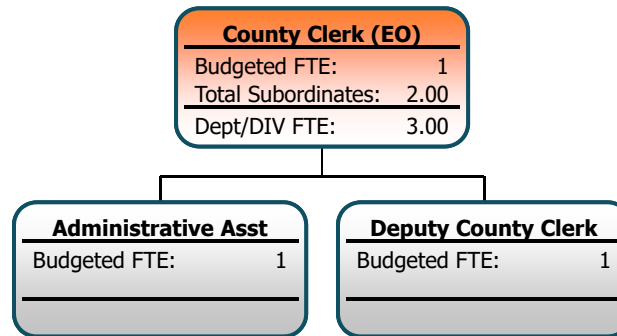
Corporation Counsel



- Elected Official
- Department Directors
- Supervisors
- State Employee

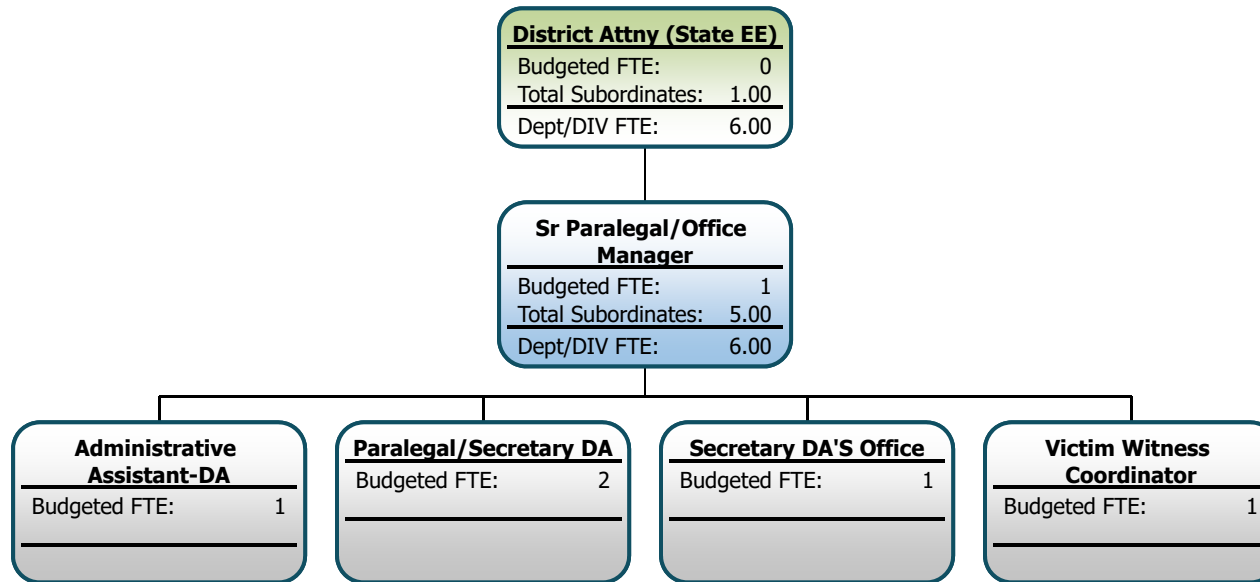






## County Clerk





# District Attorney

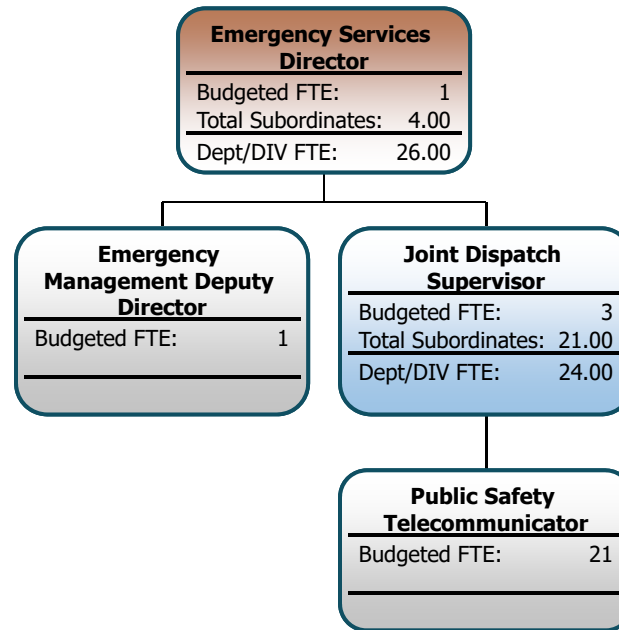


 Elected Official  
 Department Directors  
 Supervisors  
 State Employee





# Emergency Management



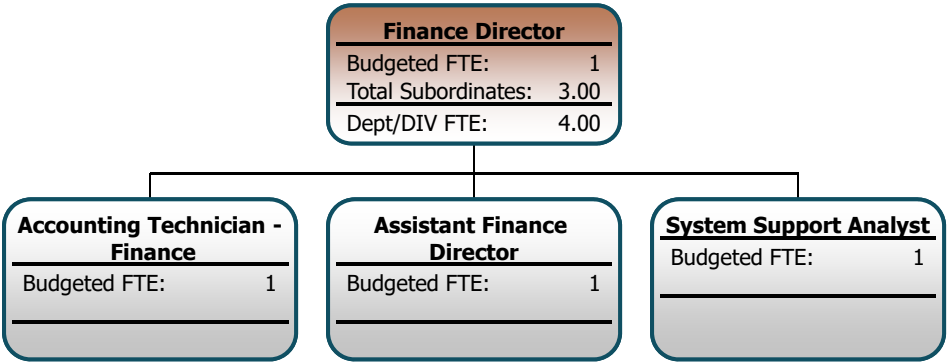


## Family Court Commissioner

Family Court Commissioner	
Budgeted FTE:	1



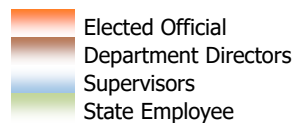
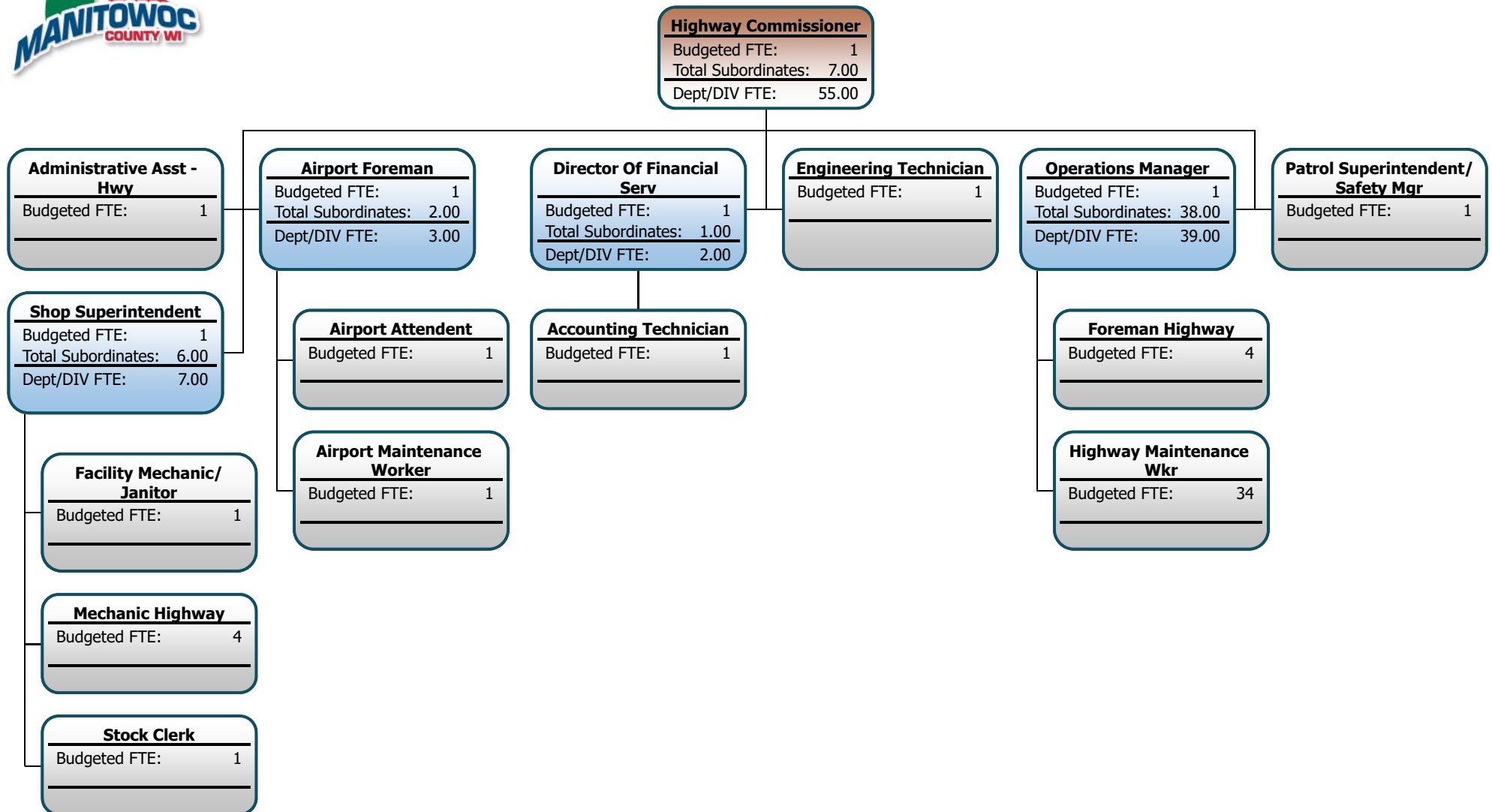
Finance Department



- Elected Official
- Department Directors
- Supervisors
- State Employee



# Highway





# Human Services

Human Services Director	
Budgeted FTE:	1
Total Subordinates:	11.00
Dept/DIV FTE:	184.50

Administrative Services Supv.	
Budgeted FTE:	1
Total Subordinates:	7.00
Dept/DIV FTE:	8.00

Business Division Mgr - HSD Deputy Director	
Budgeted FTE:	1

CCS Supervisor	
Budgeted FTE:	2
Total Subordinates:	26.00
Dept/DIV FTE:	28.00

Child Family Serv Mngr/ HSD Deputy	
Budgeted FTE:	1
Total Subordinates:	13.00
Dept/DIV FTE:	79.00

Clinic Services Manager	
Budgeted FTE:	1
Total Subordinates:	14.00
Dept/DIV FTE:	19.00

Clinical Services Mngr/ HSD Deputy	
Budgeted FTE:	1
Total Subordinates:	1.00
Dept/DIV FTE:	16.50

Economic Support Mngr/HSD Deputy	
Budgeted FTE:	1
Total Subordinates:	8.00
Dept/DIV FTE:	21.00

Financial Services Supv	
Budgeted FTE:	1
Total Subordinates:	8.00
Dept/DIV FTE:	9.00

IDP Coordinator	
Budgeted FTE:	1

Treatment Alt/ Diversion Coord	
Budgeted FTE:	1

Crisis Services Supervisor	
Budgeted FTE:	1
Total Subordinates:	14.50
Dept/DIV FTE:	15.50

Economic Support Specialist -	
Budgeted FTE:	7

Accounting Technician - HSD	
Budgeted FTE:	1

Economic Support Superv	
Budgeted FTE:	1
Total Subordinates:	12.00
Dept/DIV FTE:	13.00

Benefit Specialist	
Budgeted FTE:	1

Economic Support Specialist	
Budgeted FTE:	11

Financial Services Spec	
Budgeted FTE:	3

Receptionist - Economic Support	
Budgeted FTE:	1

Medical Billing & Coding Spec	
Budgeted FTE:	1

Staff Accountant	
Budgeted FTE:	2

Adult Protective Service Wrk	
Budgeted FTE:	6

After Hours Crisis Work	
Budgeted FTE:	4

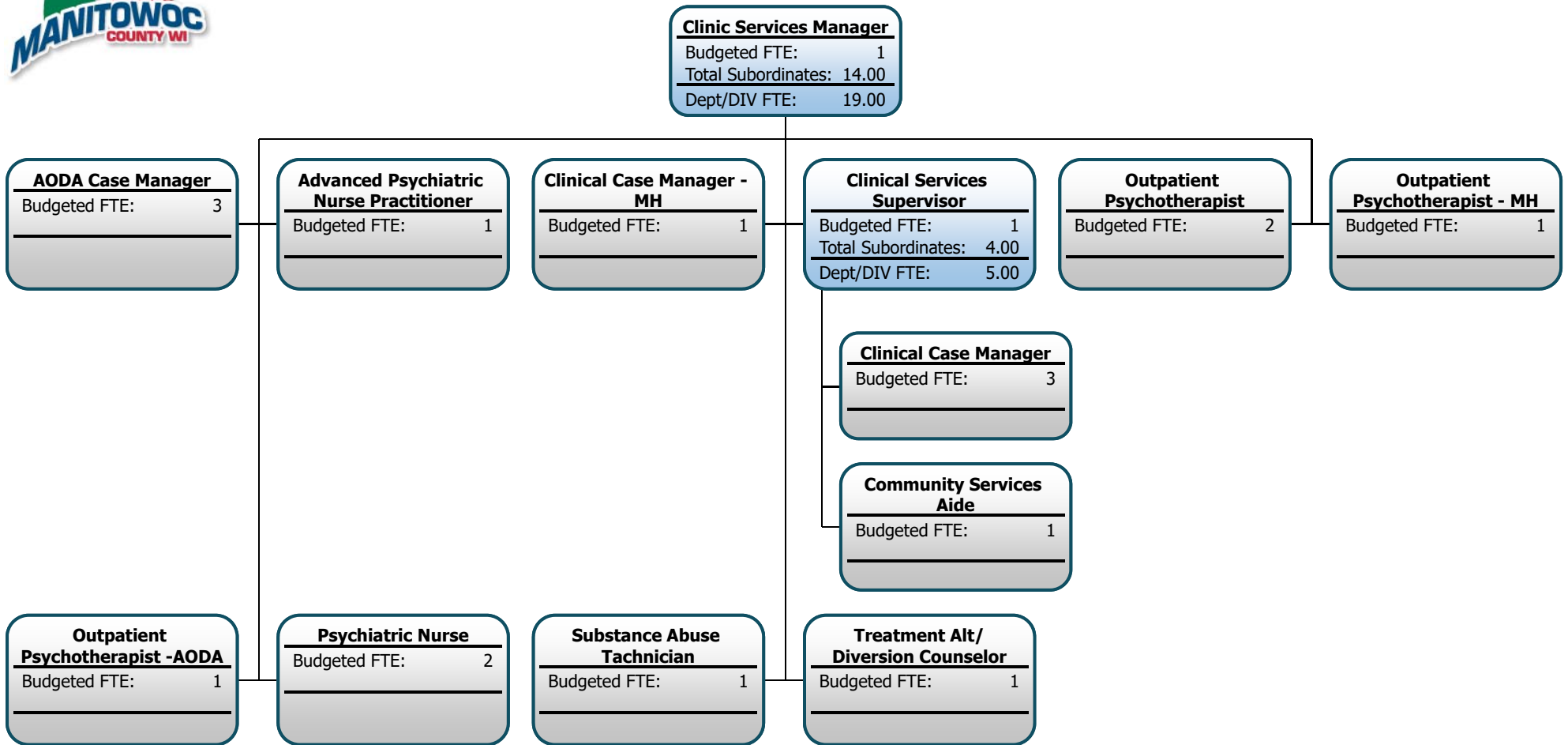
Court Liason Worker	
Budgeted FTE:	1





Day Time Crisis Worker	
Budgeted FTE:	3

Psychiatrist	
Budgeted FTE:	0.5



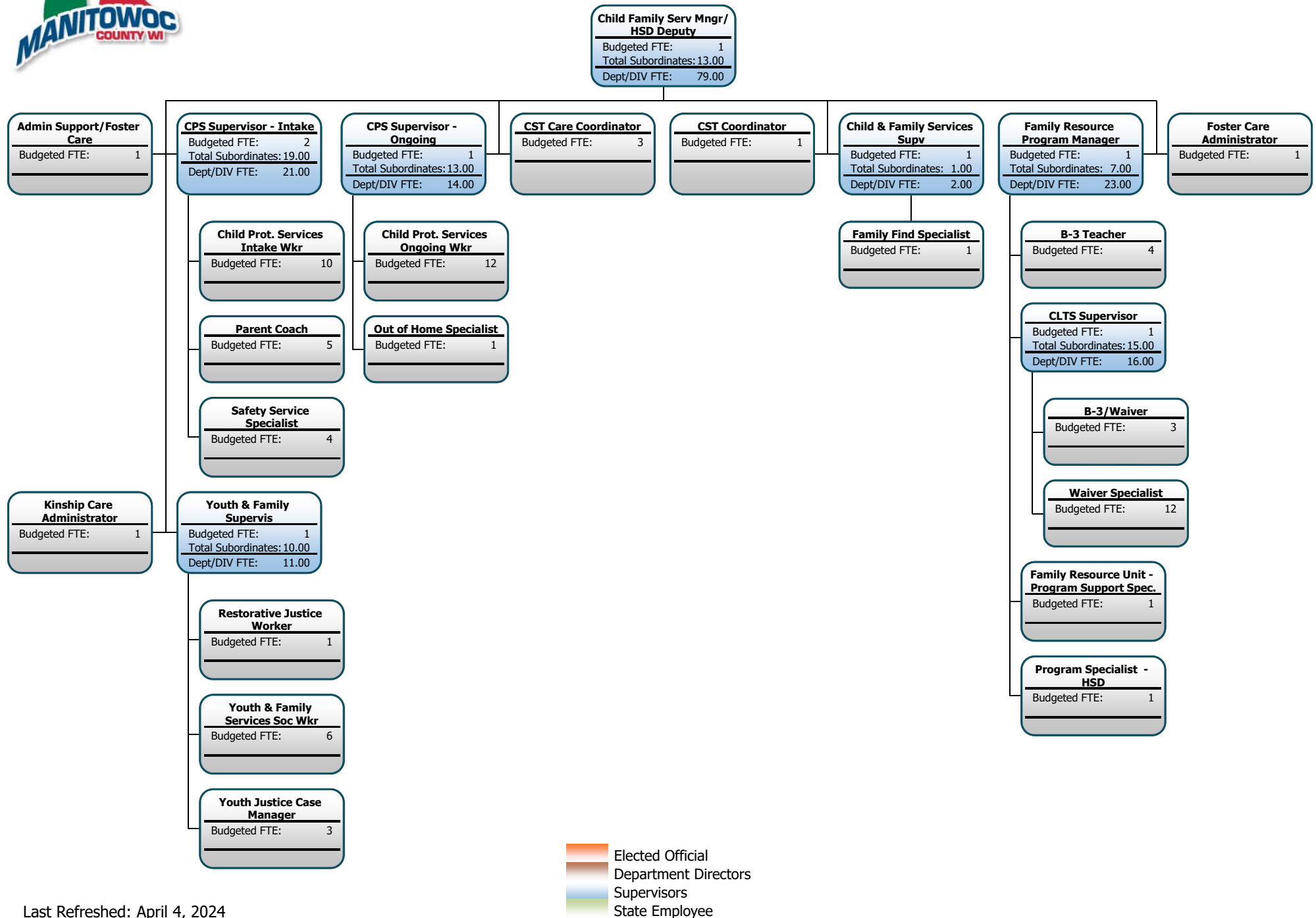
# Human Services



 Elected Official  
 Department Directors  
 Supervisors  
 State Employee

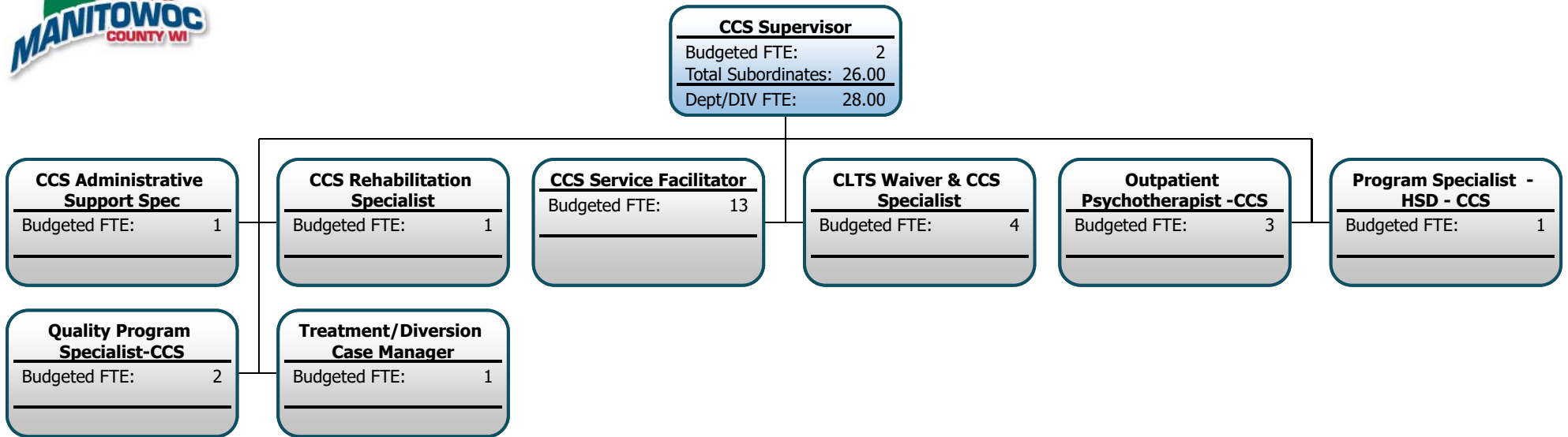






# Human Services





# Human Services

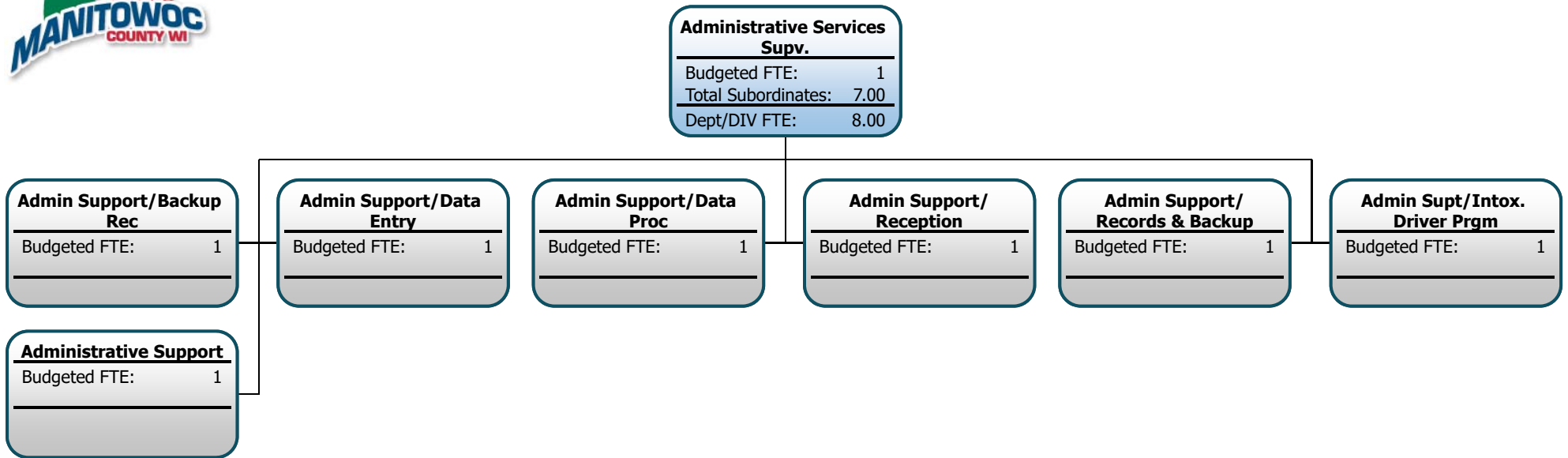


-  Elected Official
-  Department Directors
-  Supervisors
-  State Employee





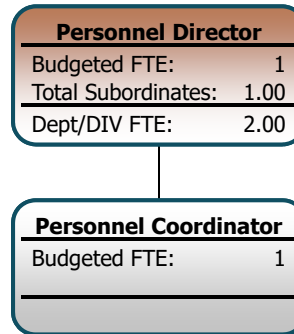
# Human Services



- Elected Official
- Department Directors
- Supervisors
- State Employee

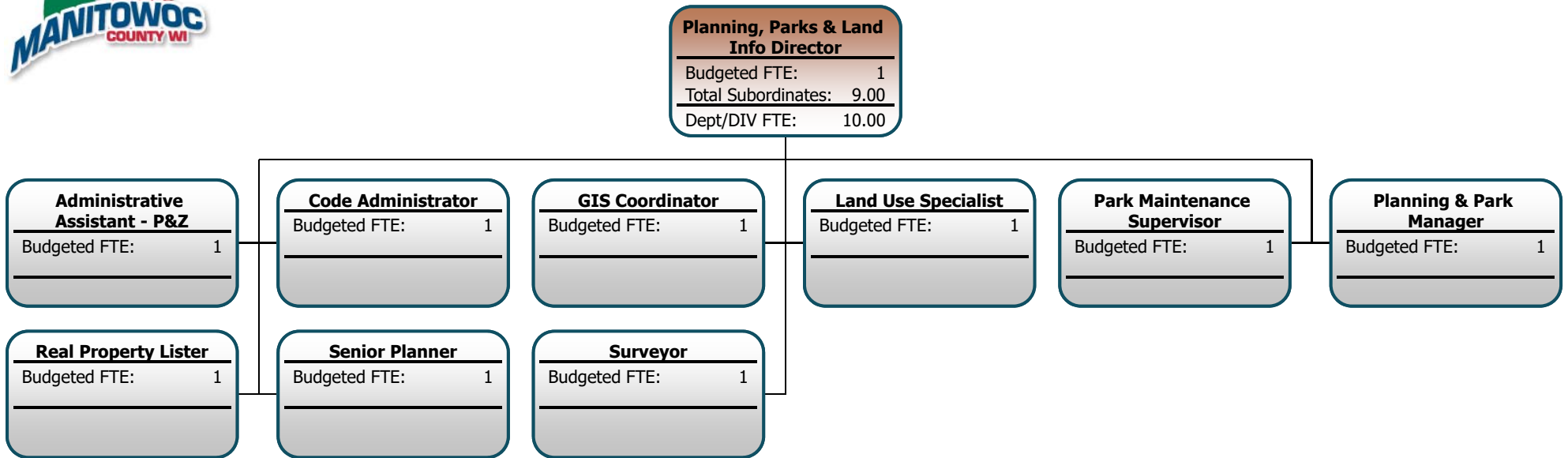


## Personnel Dept





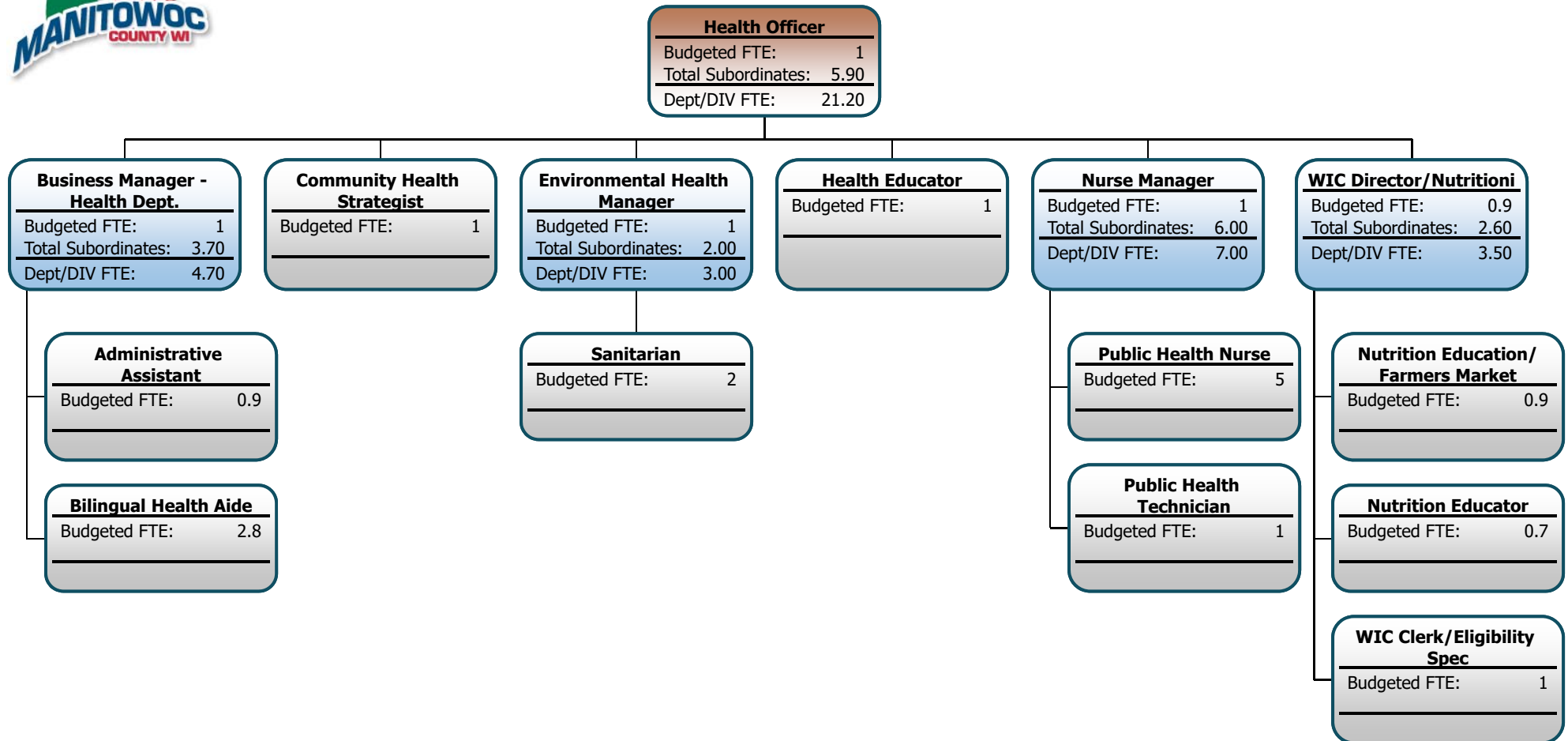
# Planning and Zoning







- Elected Official
- Department Directors
- Supervisors
- State Employee



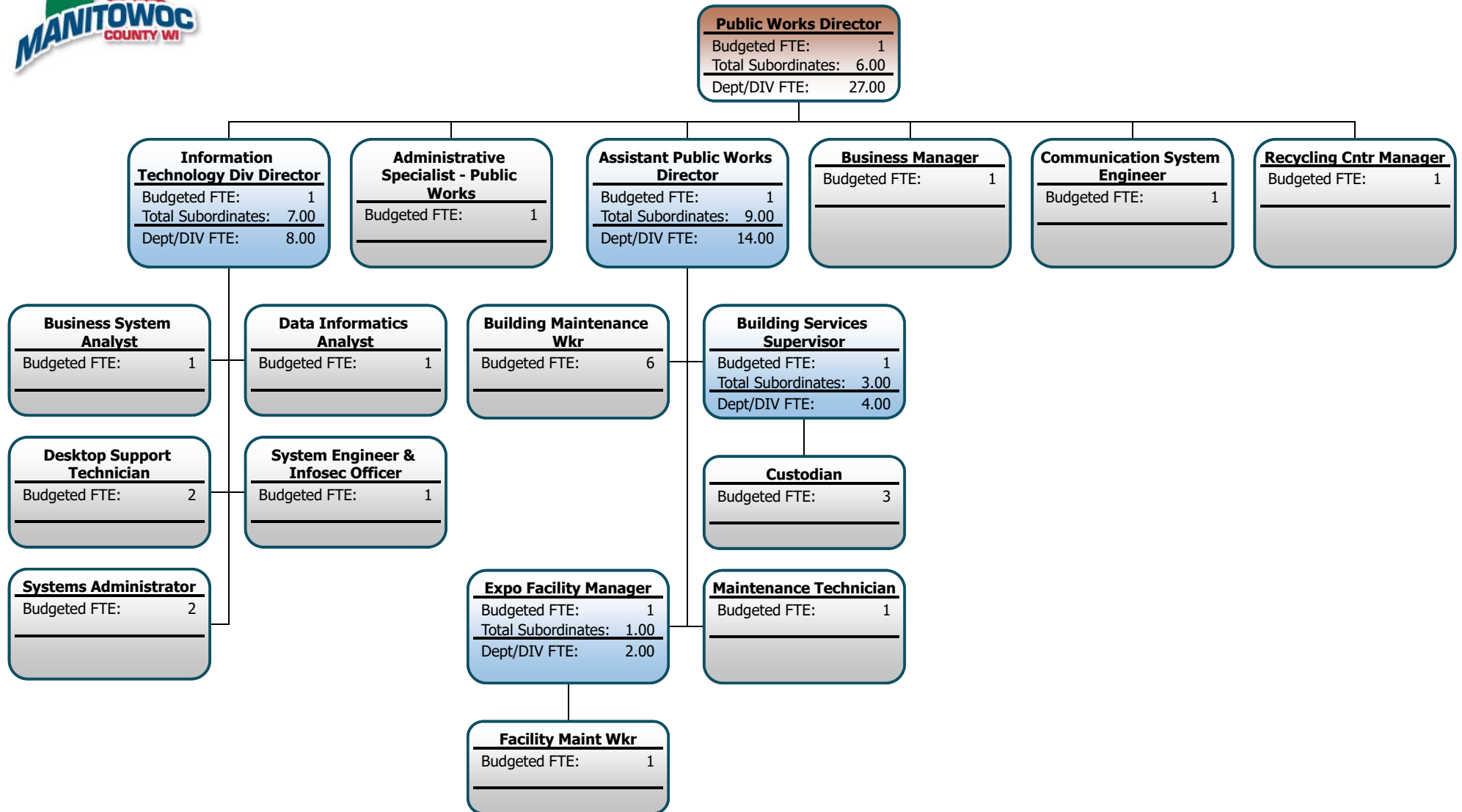
# Public Health







 Elected Official  
 Department Directors  
 Supervisors  
 State Employee



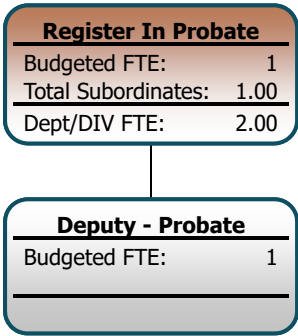
# Public Works







 Elected Official  
 Department Directors  
 Supervisors  
 State Employee



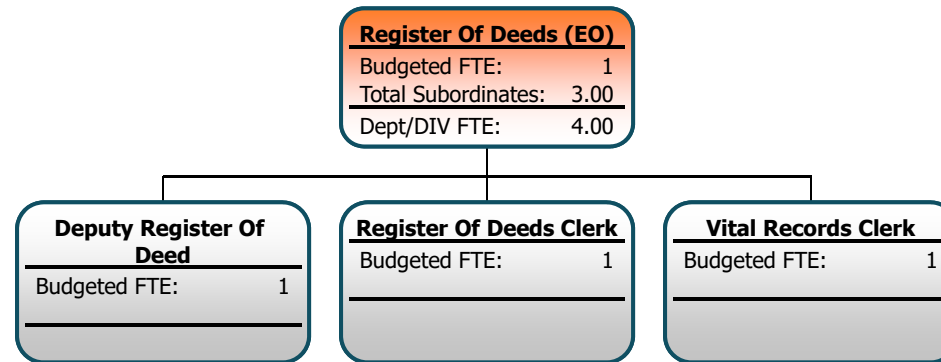
# Register in Probate



-  Elected Official
-  Department Directors
-  Supervisors
-  State Employee

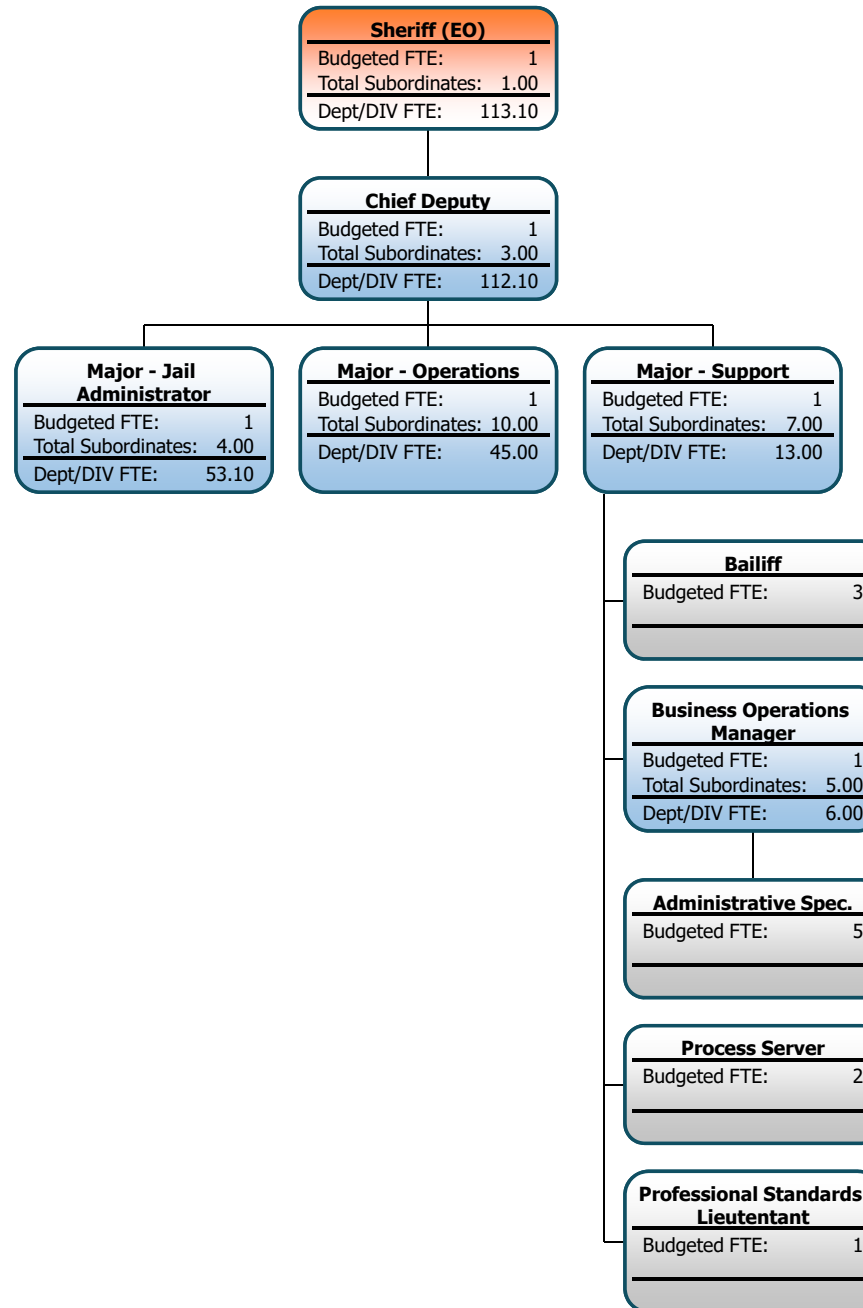






# Register of Deeds





# Sheriff

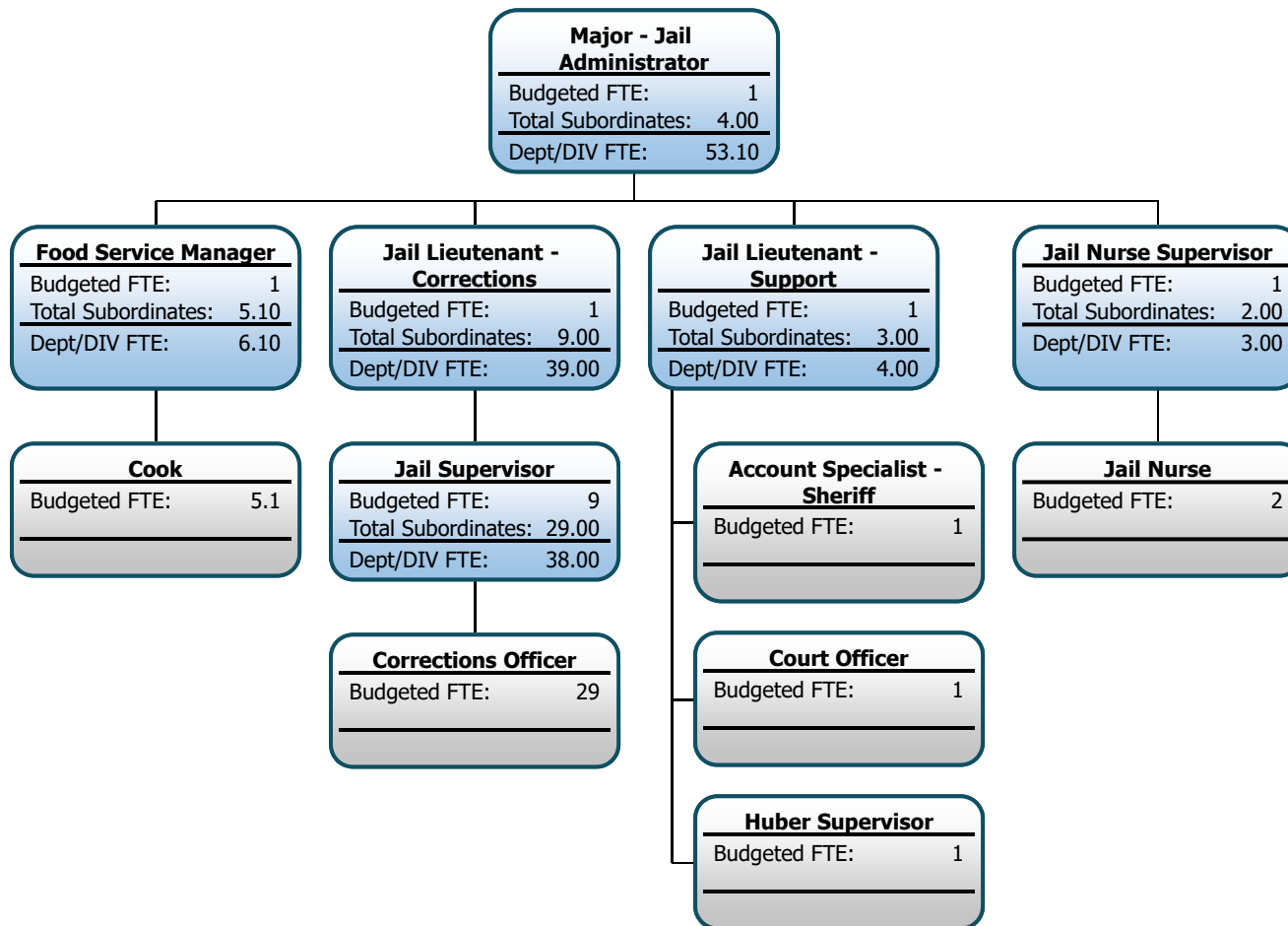






 Elected Official  
 Department Directors  
 Supervisors  
 State Employee





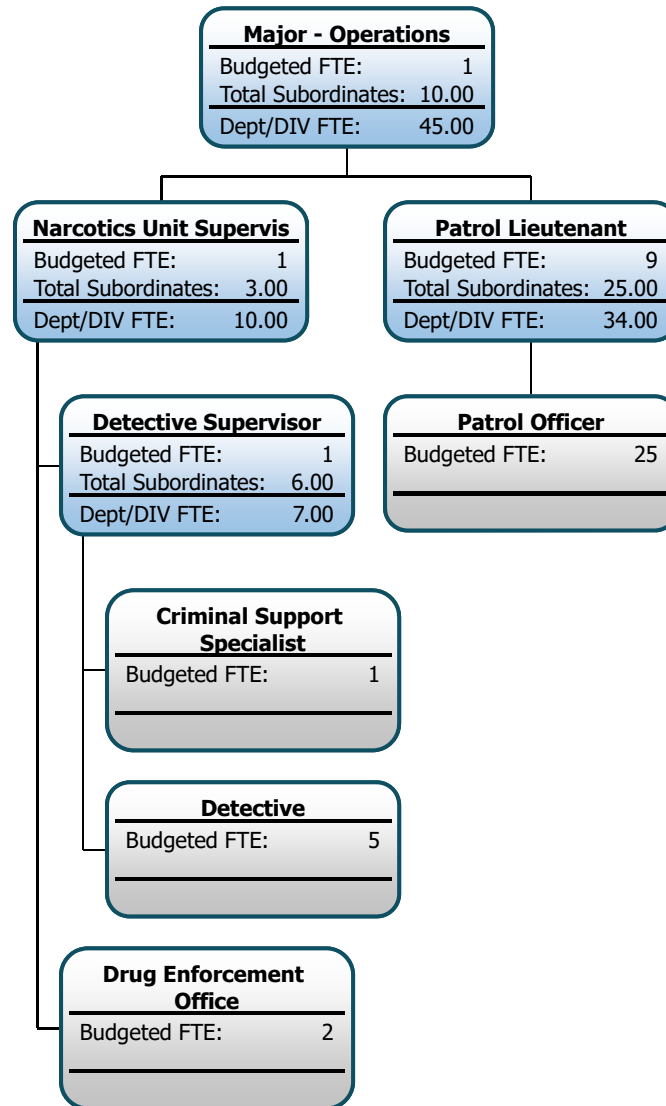
# Sheriff







 Elected Official  
 Department Directors  
 Supervisors  
 State Employee



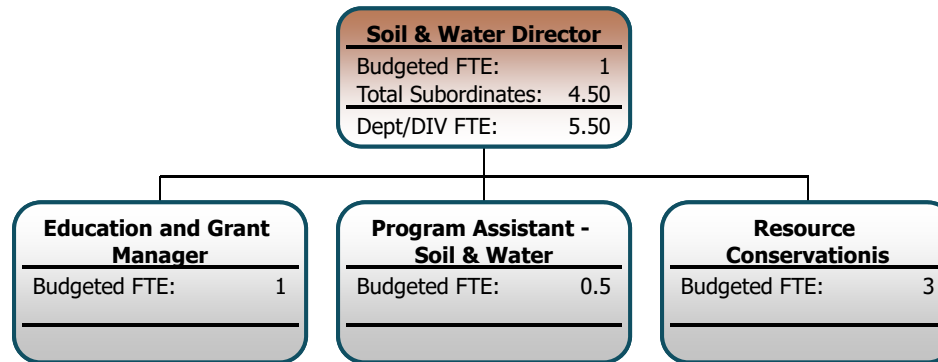
# Sheriff



 Elected Official  
 Department Directors  
 Supervisors  
 State Employee



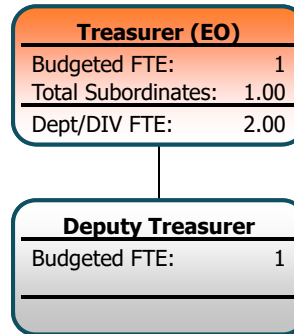
# Soil & Water Conservation



- Elected Official
- Department Directors
- Supervisors
- State Employee

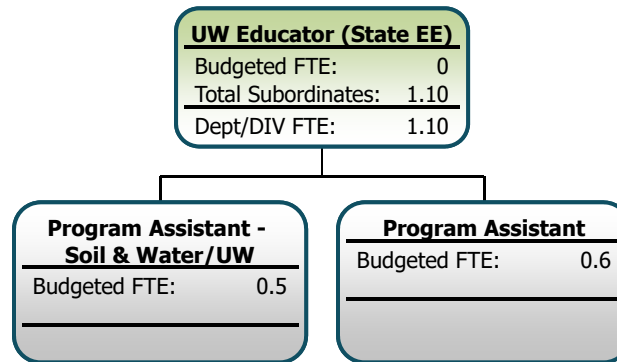


## Treasurer





## University Extension





## Veterans Service Office

